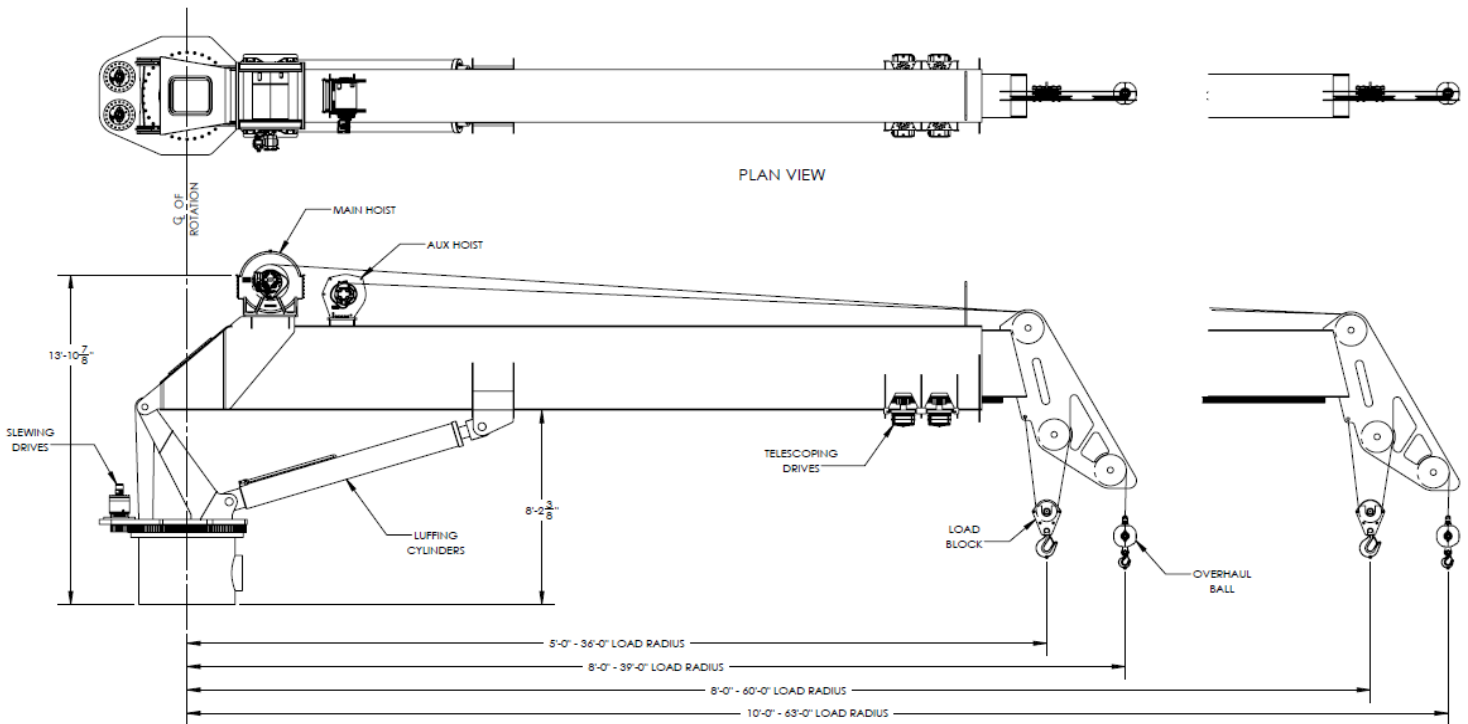




## MODEL GC30-S TELESCOPIC BOOM CRANES



STANDARD EQUIPMENT:
GCS CRANES ARE LICENSED MONOGRAMMED CRANES UNDER API-2C SPECIFICATIONS.
CRANE MOUNTED WALK AROUND CONTROLS.
HYDRAULIC LOAD INDICATOR .
PLANETARY SWING MECHANISM WITH ADJUSTABLE MOUNT, HIGH TORQUE MOTOR AND AUTOMATIC SPRING APPLIED BRAKES.
DOUBLE HYDRAULIC SWIVEL FOR CONTINUOUS ROTATION.
INDUCTION HARDENED CHROME PLATED CYLINDER RODS.
MANWAY WITH BOLTED COVER.
LOAD LINE WINCH IS DESIGNED FOR PERSONNEL HANDLING.
HYDRAULIC ANTI TWO - BLOCK.
BEVELED PEDESTAL ( WELD DOWN TYPE ).
THREE COAT MARINE PAINT SYSTEM.
ANTI-FRICTION BEARINGS IN THE SHEAVES.
GREASELESS BUSHINGS ON ALL PIVOTING POINTS.
FACTORY ASSEMBLED AND LOAD TESTED PER API SPEC. 2C OR OTHER REGULATORY REQUIREMENTS BEFORE SHIPPING.

OPTIONAL EQUIPMENT:
VARIOUS CRANE CONFIGURATIONS ( SEE PAGE 4 ) .
VARIOUS CRANE CONTROL TYPES & LOCATIONS . - REMOTELY LOCATED. - CAB MOUNTED JOY STICK TYPE . - OPEN AIR RIDE AROUND TYPE. - RADIO CONTROLS .
BOOM, GANTRY AND OTHER LIGHTING .
BOOM MAINTENANCE WALKWAYS.
CRANE SMART WIRELESS LOAD AND/OR RADIUS INDICATORS .
CRANE SMART WIRELESS ANTI TWO - BLOCK.
POWER UNITS CAN BE CRANE MOUNTED OR REMOTELY LOCATED.
POWER UNITS: ELECTRIC MOTOR OR DIESEL ENGINE .
DIESEL ENGINE STARTER SYSTEMS: ELECTRIC, AIR OR HYDRAULIC.
ELECTRIC MOTOR STARTER AND SOFT START SYSTEM .
AIR / HYDRAULIC OIL HEAT EXCHANGER.
17-4 PH STAINLESS STEEL, HEAT TREATED, CHROME PLATED CYLINDER RODS.
440C STAINLESS STEEL, HEAT TREATED PINS.
FAST LINE WINCH DESIGNED FOR PERSONNEL HANDLING.
EMERGENCY LOAD LOWERING SYSTEM.
ABS OR OTHER THIRD PARTY CERTIFICATION .
VARIOUS OTHER OPTIONS AVAILABLE UPON REQUEST.

Covington—PH: 985-892-0056

Lafayette—PH: 337-321-6900

Houston—PH: 832-532-7768

www.gulfcraneservices.com



### MODEL GC30-60S

LOAD RADIUS (FT.)	BOOM ANGLE (DEG.)	ONBOARD LOAD (LBS.)	OFFBOARD LOAD (LBS.)	BOOM ANGLE (DEG.)	ONBOARD LOAD (LBS.)	OFFBOARD LOAD (LBS.)	OTM (FT-LBS)	AXIAL LOAD (LBS)	RADIAL LOAD (LBS)	TORQUE (FT-LBS)
<b>LIFT CAPACITY CHART FULLY EXTENDED</b>				<b>LIFT CAPACITY CHART FULLY RETRACTED</b>			<b>MAXIMUM PEDESTAL REACTIONS - BASED ON API SPEC.2C 7TH ED. FACTORED LOADS</b>			
5	81.5	95,000	95,000				<i>MAXIMUM OVERTURNING MOMENT</i>			
8				82.0	95,000	66,800	3,382,500	129,200	2,100	69,000
10	73.7	95,000	76,300	80.2	94,200	61,200	<i>MAXIMUM AXIAL LOAD</i>			
15	65.5	89,700	57,500	75.4	76,800	50,200	1,917,700	227,600	3,500	38,100
20	56.7	72,900	47,100	70.5	61,200	40,000				
25	46.7	59,300	38,500	65.5	51,100	33,500				
30	34.6	48,600	31,700	60.2	44,000	29,000				
35	15.1	41,300	26,800	54.6	38,500	25,300				
36	0.0	40,100	26,000							
40				48.6	32,100	20,900				
45				41.9	28,600	18,500				
50				34.2	35,700	16,500				
55				24.4	23,500	15,000				
60				0.0	21,300	13,500				

### MODEL GC30-80S

LOAD RADIUS (FT.)	BOOM ANGLE (DEG.)	ONBOARD LOAD (LBS.)	OFFBOARD LOAD (LBS.)	BOOM ANGLE (DEG.)	ONBOARD LOAD (LBS.)	OFFBOARD LOAD (LBS.)	OTM (FT-LBS)	AXIAL LOAD (LBS)	RADIAL LOAD (LBS)	TORQUE (FT-LBS)
<b>LIFT CAPACITY CHART FULLY EXTENDED</b>				<b>LIFT CAPACITY CHART FULLY RETRACTED</b>			<b>MAXIMUM PEDESTAL REACTIONS - BASED ON API SPEC.2C 7TH ED. FACTORED LOADS</b>			
6	82.1	94,900	94,900				<i>MAXIMUM OVERTURNING MOMENT</i>			
10	77.2	94,900	71,500				3,401,200	111,100	1,900	68,900
11				81.9	55,000	36,600	<i>MAXIMUM AXIAL LOAD</i>			
15	70.9	82,000	52,800	79.0	48,100	31,900	1,932,600	232,000	3,600	38,300
20	64.4	65,600	42,400	75.4	41,400	27,500				
25	57.4	55,200	35,800	71.8	36,200	23,900				
30	49.8	47,100	30,700	68.0	32,000	21,000				
35	41.1	39,800	25,800	64.2	28,000	18,100				
40	30.5	34,300	22,100	60.2	24,900	16,000				
45	13.3	30,100	19,300	56.0	22,200	14,200				
46	0.0	28,700	18,300							
50				51.6	20,000	12,700				
55				46.9	18,100	11,400				
60				41.8	14,200	8,800				
65				36.1	12,800	7,900				
70				29.5	11,700	7,100				
75				21.0	10,800	6,500				
80				0.0	10,800	6,500				

Covington—PH: 985-892-0056

Lafayette—PH: 337-321-6900

Houston—PH: 832-532-7768

[www.gulfcraneservices.com](http://www.gulfcraneservices.com)



MODEL GC30-60S										
LOAD RADIUS (Meters)	BOOM ANGLE (DEG.)	ONBOARD LOAD (KGS.)	OFFBOARD LOAD (KGS.)	BOOM ANGLE (DEG.)	ONBOARD LOAD (KGS.)	OFFBOARD LOAD (KGS.)	OTM (N-m)	AXIAL LOAD (KGS)	RADIAL LOAD (KGS)	TORQUE (N-m)
LIFT CAPACITY CHART FULLY EXTENDED				LIFT CAPACITY CHART FULLY RE-TRACTED			MAXIMUM PEDESTAL REACTIONS - BASED ON API SPEC.2C 7TH ED. FACTORED LOADS			
1.524	81.5	43,091	43,091				MAXIMUM OVERTURNING MOMENT			
2.438				82.0	43,091	30,300	4,586,054	58,604	953	93,551
3.048	73.7	43,091	34,609	80.2	42,728	27,760	MAXIMUM AXIAL LOAD			
4.572	65.5	40,687	26,082	75.4	34,836	22,770	2,600,052	103,238	1,588	51,657
6.096	56.7	33,067	21,364	70.5	27,760	18,144				
7.620	46.7	26,898	17,463	65.5	23,179	15,195				
9.144	34.6	22,045	14,379	60.2	19,958	13,154				
10.668	15.1	18,733	12,156	54.6	17,463	11,476				
10.9728	0.0	18,189	11,793							
12.192				48.6	14,560	9,480				
13.716				41.9	12,973	8,391				
15.24				34.2	16,193	7,484				
16.764				24.4	10,659	6,804				
18.288				0.0	9,662	6,123				

MODEL GC30-80S										
LOAD RADIUS (Meters)	BOOM ANGLE (DEG.)	ONBOARD LOAD (KGS.)	OFFBOARD LOAD (KGS.)	BOOM ANGLE (DEG.)	ONBOARD LOAD (KGS.)	OFFBOARD LOAD (KGS.)	OTM (N-m)	AXIAL LOAD (KGS)	RADIAL LOAD (KGS)	TORQUE (N-m)
LIFT CAPACITY CHART FULLY EXTENDED				LIFT CAPACITY CHART FULLY RE-TRACTED			MAXIMUM PEDESTAL REACTIONS - BASED ON API SPEC.2C 7TH ED. FACTORED LOADS			
1.829	82.1	43,046	43,046	0.0	0	0	MAXIMUM OVERTURNING MOMENT			
3.048	77.2	43,046	32,432	0.0	0	0	4,611,408	50,394	862	93,416
3.353	0.0	0	0	81.9	24,948	16,601	MAXIMUM AXIAL LOAD			
4.572	70.9	37,195	23,950	79.0	21,818	14,470	2,620,254	105,233	1,633	51,928
6.096	64.4	29,756	19,232	75.4	18,779	12,474				
7.620	57.4	25,038	16,239	71.8	16,420	10,841				
9.144	49.8	21,364	13,925	68.0	14,515	9,525				
10.668	41.1	18,053	11,703	64.2	12,701	8,210				
12.192	30.5	15,558	10,024	60.2	11,294	7,257				
13.716	13.3	13,653	8,754	56.0	10,070	6,441				
14.0208	0.0	13,018	8,301							
15.24	0.0	0	0	51.6	9,072	5,761				
16.764	0.0	0	0	46.9	8,210	5,171				
18.288	0.0	0	0	41.8	6,441	3,992				
19.812	0.0	0	0	36.1	5,806	3,583				
21.336	0.0	0	0	29.5	5,307	3,221				
22.86	0.0	0	0	21.0	4,899	2,948				
24.384	0.0	0	0	0.0	4,899	2,948				

Covington—PH: 985-892-0056

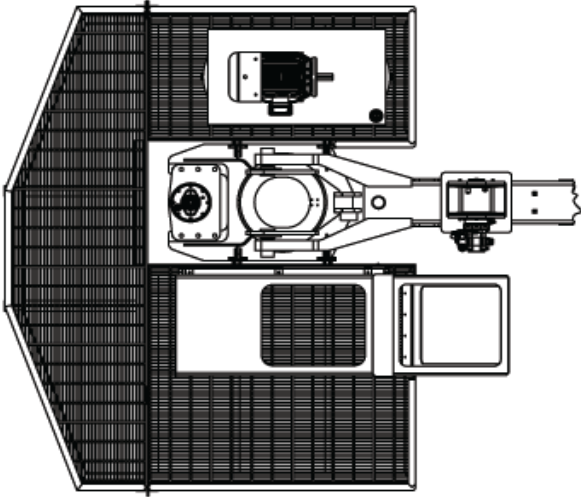
Lafayette—PH: 337-321-6900

Houston—PH: 832-532-7768

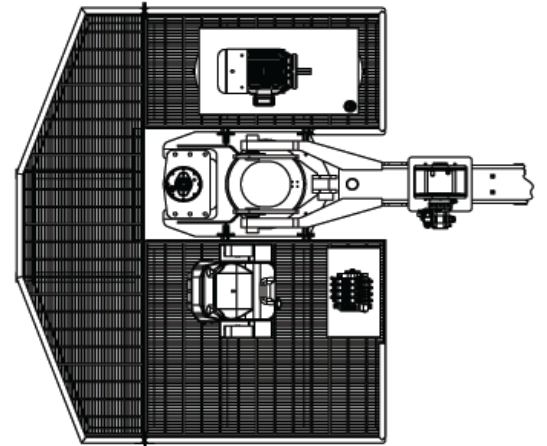
[www.gulfcraneservices.com](http://www.gulfcraneservices.com)



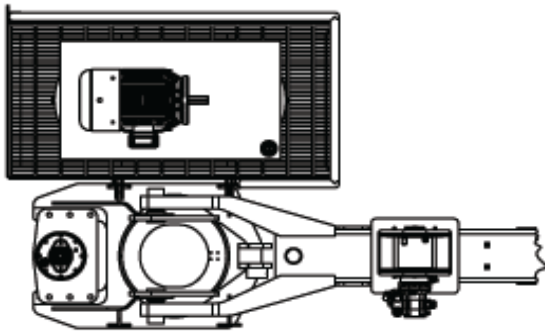
OPERATORS CAB ONBOARD  
POWER WITH PLATFORMS



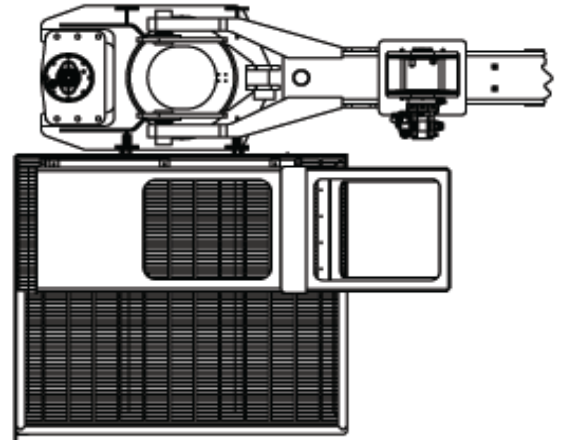
RIDE AROUND ONBOARD POWER  
WITH PLATFORMS



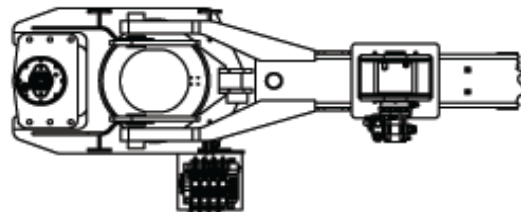
WALK AROUND CONTROLS  
ONBOARD POWER



OPERATORS CAB WITH PLATFORM  
REMOTE POWER



WALK AROUND CONTROLS REMOTE POWER



Covington—PH: 985-892-0056  
Lafayette—PH: 337-321-6900  
Houston—PH: 832-532-7768  
[www.gulfcraneservices.com](http://www.gulfcraneservices.com)

