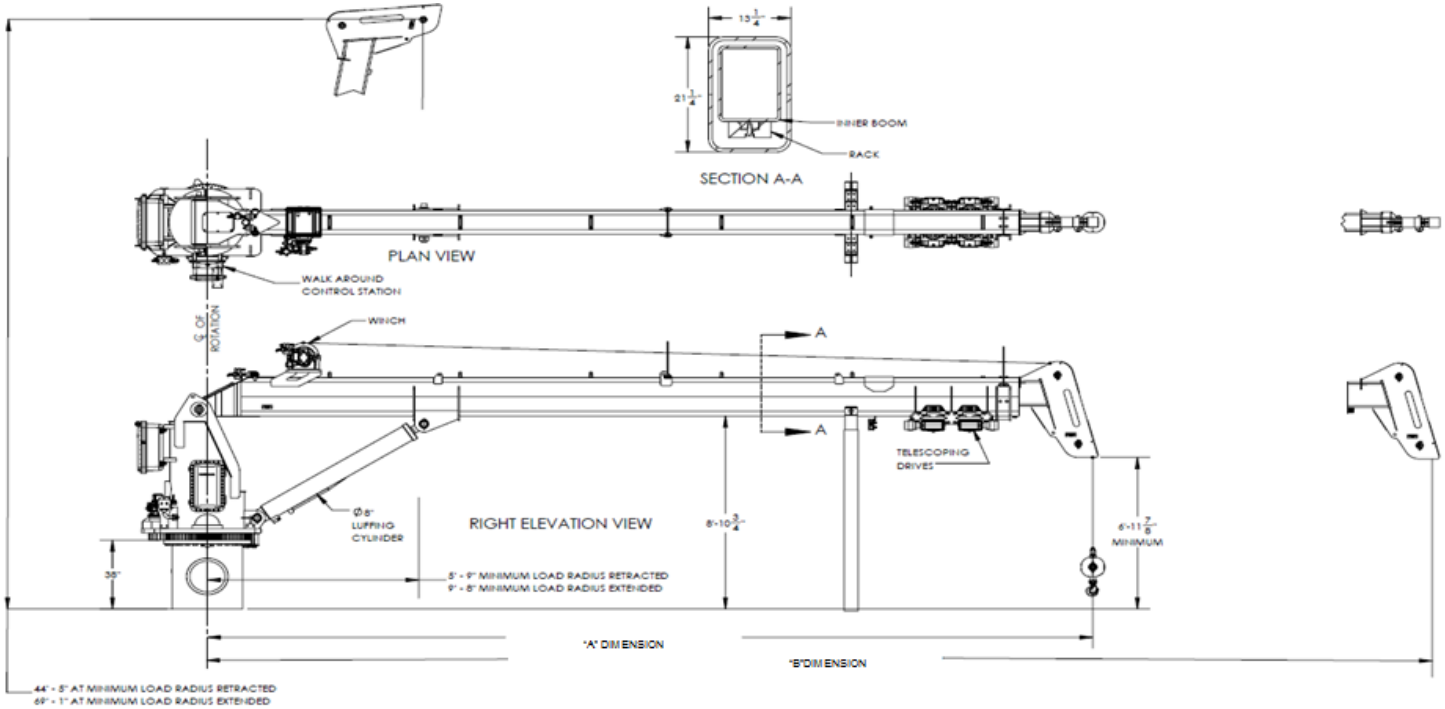




MODEL GC7.5-S TELESCOPIC BOOM CRANES



STANDARD EQUIPMENT:
GCS CRANES ARE LICENSED MONOGRAMMED CRANES UNDER API-2C SPECIFICATIONS.
CRANE MOUNTED WALK AROUND CONTROLS.
HYDRAULIC LOAD INDICATOR .
PLANETARY SWING MECHANISM WITH ADJUSTABLE MOUNT, HIGH TORQUE MOTOR AND AUTOMATIC SPRING APPLIED BRAKES.
DOUBLE HYDRAULIC SWIVEL FOR CONTINUOUS ROTATION.
INDUCTION HARDENED CHROME PLATED CYLINDER RODS.
MANWAY WITH BOLTED COVER.
LOAD LINE WINCH IS DESIGNED FOR PERSONNEL HANDLING.
HYDRAULIC ANTI TWO - BLOCK.
BEVELED PEDESTAL (WELD DOWN TYPE).
THREE COAT MARINE PAINT SYSTEM.
ANTI-FRICTION BEARINGS IN THE SHEAVES.
GREASELESS BUSHINGS ON ALL PIVOTING POINTS.
FACTORY ASSEMBLED AND LOAD TESTED PER API SPEC. 2C OR OTHER REGULATORY REQUIREMENTS BEFORE SHIPPING.

OPTIONAL EQUIPMENT:
VARIOUS CRANE CONFIGURATIONS (SEE PAGE 4) .
VARIOUS CRANE CONTROL TYPES & LOCATIONS . - REMOTELY LOCATED. - CAB MOUNTED JOY STICK TYPE . - OPEN AIR RIDE AROUND TYPE. - RADIO CONTROLS .
BOOM, GANTRY AND OTHER LIGHTING .
BOOM MAINTENANCE WALKWAYS.
CRANE SMART WIRELESS LOAD AND/OR RADIUS INDICATORS .
CRANE SMART WIRELESS ANTI TWO - BLOCK.
POWER UNITS CAN BE CRANE MOUNTED OR REMOTELY LOCATED.
POWER UNITS: ELECTRIC MOTOR OR DIESEL ENGINE .
DIESEL ENGINE STARTER SYSTEMS: ELECTRIC, AIR OR HYDRAULIC.
ELECTRIC MOTOR STARTER AND SOFT START SYSTEM .
AIR / HYDRAULIC OIL HEAT EXCHANGER.
17-4 PH STAINLESS STEEL, HEAT TREATED, CHROME PLATED CYLINDER RODS.
440C STAINLESS STEEL, HEAT TREATED PINS.
FAST LINE WINCH DESIGNED FOR PERSONNEL HANDLING.
EMERGENCY LOAD LOWERING SYSTEM.
ABS OR OTHER THIRD PARTY CERTIFICATION .
VARIOUS OTHER OPTIONS AVAILABLE UPON REQUEST.

Covington—PH: 985-892-0056

Lafayette—PH: 337-321-6900

Houston—PH: 832-532-7768

www.gulfcraneservices.com



MODEL GC7.5-60S

LOAD RADIUS	BOOM ANGLE (DEG.)	ONBOARD LOAD (LBS.)	OFFBOARD LOAD (LBS.)	BOOM ANGLE	ONBOARD LOAD (LBS.)	OFFBOARD LOAD (LBS.)	OTM (FT-LBS)	AXIAL LOAD (LBS)	RADIAL LOAD (LBS)	TORQUE (FT-LBS)
LIFT CAPACITY CHART FULLY EXTENDED				LIFT CAPACITY CHART FULLY RE-TRACTED			MAXIMUM PEDESTAL REACTIONS - BASED ON API SPEC.2C 7TH ED. FACTORED LOADS			
7				80.6	26000	19900	MAXIMUM OVERTURNING MOMENT			
10	81.7	14,000	9,300	75.6	23,000	15,200	1,087,700	44,600	1,000	23,900
15	76.8	10,600	6,900	66.9	17,200	11,300	MAXIMUM AXIAL LOAD			
20	71.9	8,400	5,400	57.5	14,400	9,400	418,000	72,700	1,300	8,400
25	66.7	7,200	4,400	46.9	12,900	8,300				
30	61.4	6,300	4,000	33.6	12,000	7,700				
35	55.7	5,300	3,300	0.0	12,000	7,700				
40	49.6	4,500	2,800							
45	42.9	3,900	2,300							
50	35.0	3,400	2,000							
55	25.1	3,000	1,700							
60	0.0	2,900	1,600							

Covington—PH: 985-892-0056
 Lafayette—PH: 337-321-6900
 Houston—PH: 832-532-7768
www.gulfcraneservices.com



MODEL GC7.5-60S							MODEL GC7.5-60S			
LOAD RADIUS (Meters)	BOOM ANGLE (DEG.)	ONBOARD LOAD (KGS.)	OFF-BOARD LOAD	BOOM ANGLE (DEG.)	ONBOARD LOAD (KGS.)	OFF-BOARD LOAD	OTM (N-m)	AXIAL LOAD (KGS)	RADIAL LOAD (KGS)	TORQUE (N-m)
LIFT CAPACITY CHART FULLY EXTENDED				LIFT CAPACITY CHART FULLY RETRACTED			MAXIMUM PEDESTAL REACTIONS - BASED ON API SPEC.2C 7TH ED. FACTORED LOADS			
2.134				80.6	11,793	9,026	MAXIMUM OVERTURNING MOMENT			
3.048	81.7	6,350	4,218	75.6	10,433	6,895	1,474,723	20,230	454	32,404
4.572	76.8	4,808	3,130	66.9	7,802	5,126	MAXIMUM AXIAL LOAD			
6.096	71.9	3,810	2,449	57.5	6,532	4,264	566,732	32,976	590	11,389
7.620	66.7	3,266	1,996	46.9	5,851	3,765				
9.144	61.4	2,858	1,814	33.6	5,443	3,493				
10.668	55.7	2,404	1,497	0.0	5,443	3,493				
12.192	49.6	2,041	1,270							
13.716	42.9	1,769	1,043							
15.240	35.0	1,542	907							
16.764	25.1	1,361	771							
18.288	0.0	1,315	726							

Covington—PH: 985-892-0056

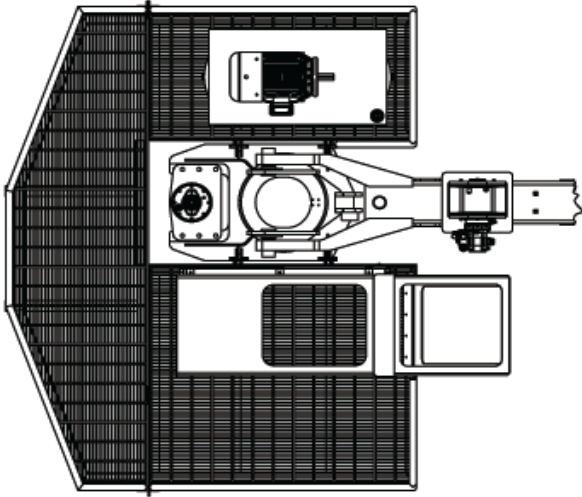
Lafayette—PH: 337-321-6900

Houston—PH: 832-532-7768

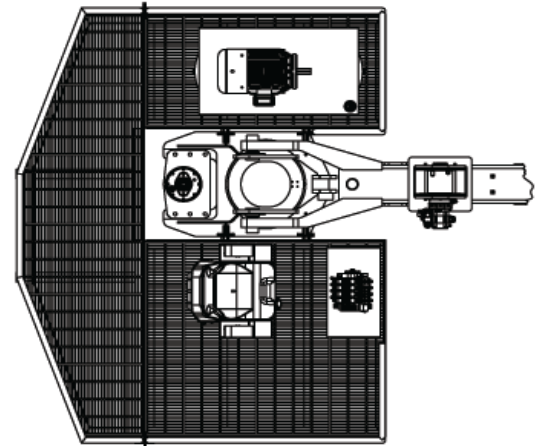
www.gulfcraneservices.com



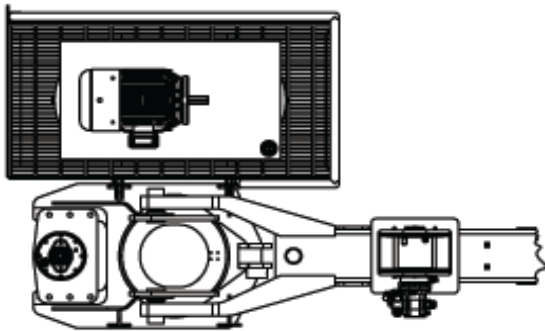
OPERATORS CAB ONBOARD
POWER WITH PLATFORMS



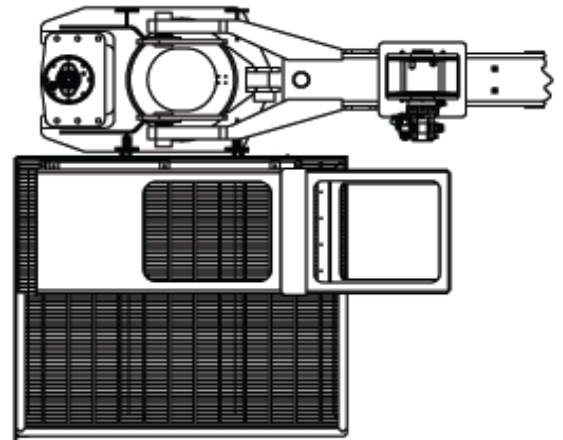
RIDE AROUND ONBOARD POWER
WITH PLATFORMS



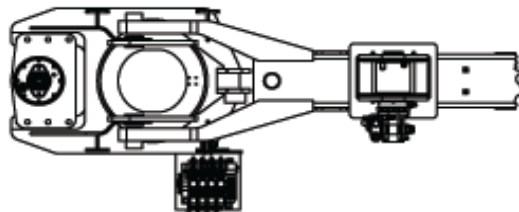
WALK AROUND CONTROLS
ONBOARD POWER



OPERATORS CAB WITH PLATFORM
REMOTE POWER



WALK AROUND CONTROLS REMOTE POWER



Covington—PH: 985-892-0056
Lafayette—PH: 337-321-6900
Houston—PH: 832-532-7768
www.gulfcraneservices.com

