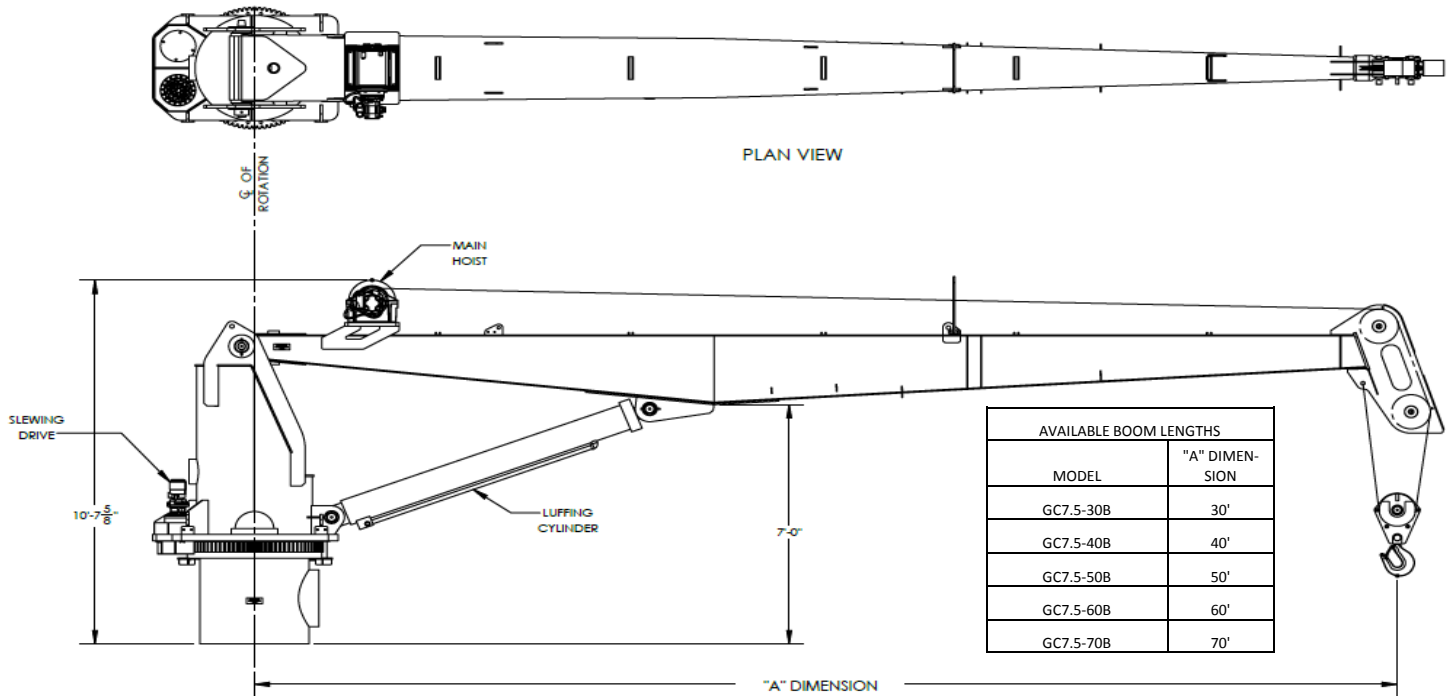




## MODEL GC7.5-B FIXED BOOM CRANES



| STANDARD EQUIPMENT:   |
|---|
| GCS CRANES ARE LICENSED MONOGRAMMED CRANES UNDER API-2C SPECIFICATIONS.                                 |
| CRANE MOUNTED WALK AROUND CONTROLS.   |
| HYDRAULIC LOAD INDICATOR .  |
| PLANETARY SWING MECHANISM WITH ADJUSTABLE MOUNT, HIGH TORQUE MOTOR AND AUTOMATIC SPRING APPLIED BRAKES. |
| DOUBLE HYDRAULIC SWIVEL FOR CONTINUOUS ROTATION.  |
| INDUCTION HARDENED CHROME PLATED CYLINDER RODS.   |
| MANWAY WITH BOLTED COVER.   |
| LOAD LINE WINCH IS DESIGNED FOR PERSONNEL HANDLING.   |
| HYDRAULIC ANTI TWO - BLOCK.   |
| BEVELED PEDESTAL ( WELD DOWN TYPE ) .   |
| THREE COAT MARINE PAINT SYSTEM.   |
| ANTI-FRICTION BEARINGS IN THE SHEAVES.  |
| GREASELESS BUSHINGS ON ALL PIVOTING POINTS.   |
| FACTORY ASSEMBLED AND LOAD TESTED PER API SPEC. 2C OR OTHER REGULATORY REQUIREMENTS BEFORE SHIPPING.    |

| OPTIONAL EQUIPMENT:   |
|---|
| VARIOUS CRANE CONFIGURATIONS ( SEE PAGE 4 ) .                 |
| VARIOUS CRANE CONTROL TYPES & LOCATIONS .                     |
| - REMOTELY LOCATED.   |
| - CAB MOUNTED JOY STICK TYPE .                                |
| - OPEN AIR RIDE AROUND TYPE.                                  |
| - RADIO CONTROLS .  |
| BOOM, GANTRY AND OTHER LIGHTING .                             |
| BOOM MAINTENANCE WALKWAYS.                                    |
| CRANE SMART WIRELESS LOAD AND/OR RADIUS INDICATORS .          |
| CRANE SMART WIRELESS ANTI TWO - BLOCK.                        |
| POWER UNITS CAN BE CRANE MOUNTED OR REMOTELY LOCATED.         |
| POWER UNITS: ELECTRIC MOTOR OR DIESEL ENGINE .                |
| DIESEL ENGINE STARTER SYSTEMS: ELECTRIC, AIR OR HYDRAULIC.    |
| ELECTRIC MOTOR STARTER AND SOFT START SYSTEM .                |
| AIR / HYDRAULIC OIL HEAT EXCHANGER.                           |
| 17-4 PH STAINLESS STEEL, HEAT TREATED, CHROME PLATED CYLINDER |
| 440C STAINLESS STEEL, HEAT TREATED PINS.                      |
| FAST LINE WINCH DESIGNED FOR PERSONNEL HANDLING.              |
| EMERGENCY LOAD LOWERING SYSTEM.                               |
| ABS OR OTHER THIRD PARTY CERTIFICATION .                      |
| VARIOUS OTHER OPTIONS AVAILABLE UPON REQUEST.                 |

Covington—PH: 985-892-0056

Lafayette—PH: 337-321-6900

Houston—PH: 832-532-7768

www.gulfcraneservices.com



| MODEL GC7.5-30B            |                   |                     |                      |   |                  |                   |                 |
|----------------------------|-------------------|---------------------|----------------------|---|------------------|-------------------|-----------------|
| LOAD RADIUS (FT.)          | BOOM ANGLE (DEG.) | ONBOARD LOAD (LBS.) | OFFBOARD LOAD (LBS.) | OTM (FT-LBS)  | AXIAL LOAD (LBS) | RADIAL LOAD (LBS) | TORQUE (FT-LBS) |
| <b>LIFT CAPACITY CHART</b> |                   |                     |                      | <b>MAXIMUM PEDESTAL REACTIONS - BASED ON API SPEC.2C 7TH ED. FACTORED LOADS</b> |                  |                   |                 |
| 6                          | 81.6              | 25,300              | 26,100               | <b>MAXIMUM OVERTURNING MOMENT</b>   |                  |                   |                 |
| 10                         | 73.8              | 25,300              | 18,800               | 1,014,700   | 44,200           | 800               | 20,900          |
| 15                         | 63.4              | 25,000              | 13,600               | <b>MAXIMUM AXIAL LOAD</b>   |                  |                   |                 |
| 20                         | 51.7              | 21,200              | 10,500               | 541,800   | 64,100           | 1,100             | 6,400           |
| 25                         | 37.2              | 17,500              | 8,300                |   |                  |                   |                 |
| 30                         | 0.0               | 15,400              | 5,400                |   |                  |                   |                 |

| MODEL GC7.5-40B            |                   |                     |                      |   |                  |                   |                 |
|----------------------------|-------------------|---------------------|----------------------|---|------------------|-------------------|-----------------|
| LOAD RADIUS (FT.)          | BOOM ANGLE (DEG.) | ONBOARD LOAD (LBS.) | OFFBOARD LOAD (LBS.) | OTM (FT-LBS)  | AXIAL LOAD (LBS) | RADIAL LOAD (LBS) | TORQUE (FT-LBS) |
| <b>LIFT CAPACITY CHART</b> |                   |                     |                      | <b>MAXIMUM PEDESTAL REACTIONS - BASED ON API SPEC.2C 7TH ED. FACTORED LOADS</b> |                  |                   |                 |
| 8                          | 80.4              | 25,100              | 22,900               | <b>MAXIMUM OVERTURNING MOMENT</b>   |                  |                   |                 |
| 10                         | 74.5              | 25,100              | 19,300               | 872,300   | 32,700           | 700               | 18,700          |
| 15                         | 68.4              | 21,900              | 14,400               | <b>MAXIMUM AXIAL LOAD</b>   |                  |                   |                 |
| 20                         | 62.0              | 17,200              | 11,300               | 544,500   | 64,600           | 1,100             | 10,900          |
| 25                         | 55.2              | 14,100              | 9,100                |   |                  |                   |                 |
| 30                         | 47.7              | 11,800              | 7,600                |   |                  |                   |                 |
| 35                         | 28.1              | 10,200              | 6,500                |   |                  |                   |                 |
| 40                         | 0.0               | 9,200               | 5,900                |   |                  |                   |                 |

| MODEL GC7.5-50B            |                   |                     |                      |   |                  |                   |                 |
|----------------------------|-------------------|---------------------|----------------------|---|------------------|-------------------|-----------------|
| LOAD RADIUS (FT.)          | BOOM ANGLE (DEG.) | ONBOARD LOAD (LBS.) | OFFBOARD LOAD (LBS.) | OTM (FT-LBS)  | AXIAL LOAD (LBS) | RADIAL LOAD (LBS) | TORQUE (FT-LBS) |
| <b>LIFT CAPACITY CHART</b> |                   |                     |                      | <b>MAXIMUM PEDESTAL REACTIONS - BASED ON API SPEC.2C 7TH ED. FACTORED LOADS</b> |                  |                   |                 |
| 10                         | 80.4              | 24,100              | 16,800               | <b>MAXIMUM OVERTURNING MOMENT</b>   |                  |                   |                 |
| 15                         | 74.5              | 19,300              | 12,800               | 787,300   | 27,000           | 700               | 17,800          |
| 20                         | 68.4              | 15,400              | 10,100               | <b>MAXIMUM AXIAL LOAD</b>   |                  |                   |                 |
| 25                         | 62.0              | 12,800              | 8,300                | 531,100   | 63,400           | 1,100             | 17,800          |
| 30                         | 55.2              | 9,900               | 6,400                |   |                  |                   |                 |
| 35                         | 47.7              | 8,400               | 5,400                |   |                  |                   |                 |
| 40                         | 39.0              | 7,300               | 4,600                |   |                  |                   |                 |
| 45                         | 28.1              | 6,500               | 4,000                |   |                  |                   |                 |
| 50                         | 0.0               | 6,000               | 3,700                |   |                  |                   |                 |

| MODEL GC7.5-60B            |                   |                     |                      |   |                  |                   |                 |
|----------------------------|-------------------|---------------------|----------------------|---|------------------|-------------------|-----------------|
| LOAD RADIUS (FT.)          | BOOM ANGLE (DEG.) | ONBOARD LOAD (LBS.) | OFFBOARD LOAD (LBS.) | OTM (FT-LBS)  | AXIAL LOAD (LBS) | RADIAL LOAD (LBS) | TORQUE (FT-LBS) |
| <b>LIFT CAPACITY CHART</b> |                   |                     |                      | <b>MAXIMUM PEDESTAL REACTIONS - BASED ON API SPEC.2C 7TH ED. FACTORED LOADS</b> |                  |                   |                 |
| 10                         | 82.0              | 16,500              | 14,300               | <b>MAXIMUM OVERTURNING MOMENT</b>   |                  |                   |                 |
| 15                         | 77.1              | 16,200              | 10,800               | 765,500   | 24,500           | 700               | 19,100          |
| 20                         | 72.2              | 12,900              | 8,500                | <b>MAXIMUM AXIAL LOAD</b>   |                  |                   |                 |
| 25                         | 67.1              | 10,600              | 7,000                | 378,400   | 48,400           | 1,000             | 7,700           |
| 30                         | 67.7              | 9,600               | 6,300                |   |                  |                   |                 |
| 35                         | 56.0              | 8,200               | 5,300                |   |                  |                   |                 |
| 40                         | 49.9              | 7,100               | 4,600                |   |                  |                   |                 |
| 45                         | 43.2              | 6,200               | 4,000                |   |                  |                   |                 |
| 50                         | 35.4              | 5,500               | 3,500                |   |                  |                   |                 |
| 55                         | 25.4              | 4,900               | 3,100                |   |                  |                   |                 |
| 60                         | 0.0               | 4,600               | 2,900                |   |                  |                   |                 |

Covington—PH: 985-892-0056

Lafayette—PH: 337-321-6900

Houston—PH: 832-532-7768

www.gulfcraneservices.com



| MODEL GC7.5-30B            |                   |                     |                      |   |                  |                   |              |
|----------------------------|-------------------|---------------------|----------------------|---|------------------|-------------------|--------------|
| LOAD RADIUS (Meters)       | BOOM ANGLE (DEG.) | ONBOARD LOAD (KGS.) | OFFBOARD LOAD (KGS.) | OTM (N-m)   | AXIAL LOAD (KGS) | RADIAL LOAD (KGS) | TORQUE (N-m) |
| <b>LIFT CAPACITY CHART</b> |                   |                     |                      | <b>MAXIMUM PEDESTAL REACTIONS - BASED ON API SPEC.2C 7TH ED. FACTORED LOADS</b> |                  |                   |              |
| 1.829                      | 81.6              | 11,476              | 11,839               | <b>MAXIMUM OVERTURNING MOMENT</b>   |                  |                   |              |
| 3.048                      | 73.8              | 11,476              | 8,528                | 1,375,748   | 20,049           | 363               | 28,337       |
| 4.572                      | 63.4              | 11,340              | 6,169                | <b>MAXIMUM AXIAL LOAD</b>   |                  |                   |              |
| 6.096                      | 51.7              | 9,616               | 4,763                | 734,582   | 29,075           | 499               | 8,677        |
| 7.620                      | 37.2              | 7,938               | 3,765                |   |                  |                   |              |
| 9.144                      | 0.0               | 6,985               | 2,449                |   |                  |                   |              |

| MODEL GC7.5-40B            |                   |                     |                      |   |                  |                   |              |
|----------------------------|-------------------|---------------------|----------------------|---|------------------|-------------------|--------------|
| LOAD RADIUS (Meters)       | BOOM ANGLE (DEG.) | ONBOARD LOAD (KGS.) | OFFBOARD LOAD (KGS.) | OTM (N-m)   | AXIAL LOAD (KGS) | RADIAL LOAD (KGS) | TORQUE (N-m) |
| <b>LIFT CAPACITY CHART</b> |                   |                     |                      | <b>MAXIMUM PEDESTAL REACTIONS - BASED ON API SPEC.2C 7TH ED. FACTORED LOADS</b> |                  |                   |              |
| 2.438                      | 80.4              | 11,385              | 10,387               | <b>MAXIMUM OVERTURNING MOMENT</b>   |                  |                   |              |
| 3.048                      | 74.5              | 11,385              | 8,754                | 1,182,680   | 14,832           | 318               | 25,354       |
| 4.572                      | 68.4              | 9,934               | 6,532                | <b>MAXIMUM AXIAL LOAD</b>   |                  |                   |              |
| 6.096                      | 62.0              | 7,802               | 5,126                | 738,243   | 29,302           | 499               | 14,778       |
| 7.620                      | 55.2              | 6,396               | 4,128                |   |                  |                   |              |
| 9.144                      | 47.7              | 5,352               | 3,447                |   |                  |                   |              |
| 10.668                     | 28.1              | 4,627               | 2,948                |   |                  |                   |              |
| 12.192                     | 0.0               | 4,173               | 2,676                |   |                  |                   |              |

| MODEL GC7.5-50B            |                   |                     |                      |   |                  |                   |              |
|----------------------------|-------------------|---------------------|----------------------|---|------------------|-------------------|--------------|
| LOAD RADIUS (Meters)       | BOOM ANGLE (DEG.) | ONBOARD LOAD (KGS.) | OFFBOARD LOAD (KGS.) | OTM (N-m)   | AXIAL LOAD (KGS) | RADIAL LOAD (KGS) | TORQUE (N-m) |
| <b>LIFT CAPACITY CHART</b> |                   |                     |                      | <b>MAXIMUM PEDESTAL REACTIONS - BASED ON API SPEC.2C 7TH ED. FACTORED LOADS</b> |                  |                   |              |
| 3.048                      | 80.4              | 10,932              | 7,620                | <b>MAXIMUM OVERTURNING MOMENT</b>   |                  |                   |              |
| 4.572                      | 74.5              | 8,754               | 5,806                | 1,067,435   | 12,247           | 318               | 24,134       |
| 6.096                      | 68.4              | 6,985               | 4,581                | <b>MAXIMUM AXIAL LOAD</b>   |                  |                   |              |
| 7.620                      | 62.0              | 5,806               | 3,765                | 720,075   | 28,758           | 499               | 24,134       |
| 9.144                      | 55.2              | 4,491               | 2,903                |   |                  |                   |              |
| 10.668                     | 47.7              | 3,810               | 2,449                |   |                  |                   |              |
| 12.192                     | 39.0              | 3,311               | 2,087                |   |                  |                   |              |
| 13.716                     | 28.1              | 2,948               | 1,814                |   |                  |                   |              |
| 15.240                     | 0.0               | 2,722               | 1,678                |   |                  |                   |              |

| MODEL GC7.5-60B            |                   |                     |                      |   |                  |                   |              |
|----------------------------|-------------------|---------------------|----------------------|---|------------------|-------------------|--------------|
| LOAD RADIUS (Meters)       | BOOM ANGLE (DEG.) | ONBOARD LOAD (KGS.) | OFFBOARD LOAD (KGS.) | OTM (N-m)   | AXIAL LOAD (KGS) | RADIAL LOAD (KGS) | TORQUE (N-m) |
| <b>LIFT CAPACITY CHART</b> |                   |                     |                      | <b>MAXIMUM PEDESTAL REACTIONS - BASED ON API SPEC.2C 7TH ED. FACTORED LOADS</b> |                  |                   |              |
| 3.048                      | 82.0              | 7,484               | 6,486                | <b>MAXIMUM OVERTURNING MOMENT</b>   |                  |                   |              |
| 4.572                      | 77.1              | 7,348               | 4,899                | 1,037,879   | 11,113           | 318               | 25,896       |
| 6.096                      | 72.2              | 5,851               | 3,856                | <b>MAXIMUM AXIAL LOAD</b>   |                  |                   |              |
| 7.620                      | 67.1              | 4,808               | 3,175                | 513,042   | 21,954           | 454               | 10,440       |
| 9.144                      | 67.7              | 4,354               | 2,858                |   |                  |                   |              |
| 10.668                     | 56.0              | 3,719               | 2,404                |   |                  |                   |              |
| 12.192                     | 49.9              | 3,221               | 2,087                |   |                  |                   |              |
| 13.716                     | 43.2              | 2,812               | 1,814                |   |                  |                   |              |
| 15.240                     | 35.4              | 2,495               | 1,588                |   |                  |                   |              |
| 16.764                     | 25.4              | 2,223               | 1,406                |   |                  |                   |              |
| 18.288                     | 0.0               | 2,087               | 1,315                |   |                  |                   |              |

Covington—PH: 985-892-0056

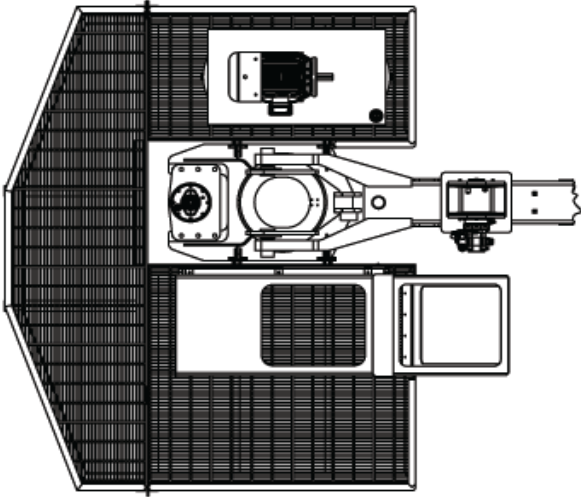
Lafayette—PH: 337-321-6900

Houston—PH: 832-532-7768

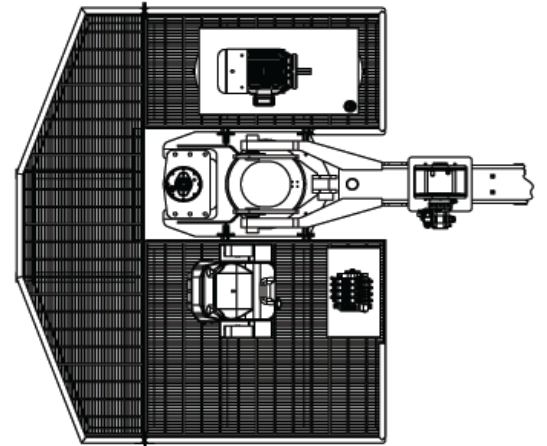
www.gulfcraneservices.com



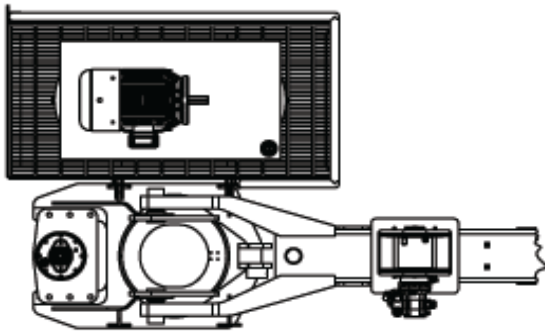
OPERATORS CAB ONBOARD  
POWER WITH PLATFORMS



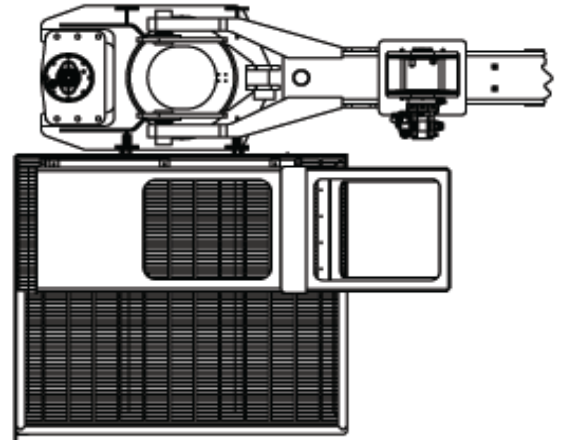
RIDE AROUND ONBOARD POWER  
WITH PLATFORMS



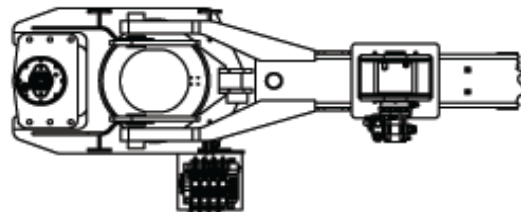
WALK AROUND CONTROLS  
ONBOARD POWER



OPERATORS CAB WITH PLATFORM  
REMOTE POWER



WALK AROUND CONTROLS REMOTE POWER



Covington—PH: 985-892-0056  
Lafayette—PH: 337-321-6900  
Houston—PH: 832-532-7768  
[www.gulfcraneservices.com](http://www.gulfcraneservices.com)

