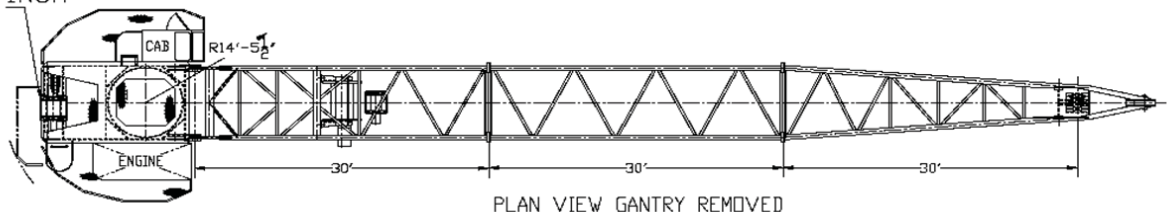


SIDE VIEW

LUFFING WINCH



PLAN VIEW GANTRY REMOVED

AVAILABLE BOOM LENGTHS	
Model	A - Dim
90L	90 ft.
100L	100 ft.
110L	110 ft.
120L	120 ft.
130L	130 ft.
140L	140 ft.

STANDARD CRANE/SPECIFICATIONS	OPTIONAL EQUIPMENT/SPECIFICATIONS
<ul style="list-style-type: none"> • API – 2C Monogram 	<ul style="list-style-type: none"> • Optional Prime Mover: Detroit, Duetz Power Pack
<ul style="list-style-type: none"> • Hydraulic Swing Mechanism w/Adjustable Mount 	<ul style="list-style-type: none"> • Optional Starter System; Electric or Hydraulic
<ul style="list-style-type: none"> • 18" Manway 	<ul style="list-style-type: none"> • Winch Removal Jib Device
<ul style="list-style-type: none"> • Hydraulic Load Cell Indicating System 	<ul style="list-style-type: none"> • 440C Stainless Steel Heat Treated Pins
<ul style="list-style-type: none"> • Hydraulic Anti Two Block System 	<ul style="list-style-type: none"> • ABS Certifications

CAPACITY LOAD CHART GC-100T-90L FOOT BOOM

RADIUS (FEET)	BOOM ANGLE	STATIC (LB.)	DYNAMIC (LB.)
20	81°	220,070	146,345
25	78°	228,798	159,864
30	75°	202,193	134,458
35	71°	172,673	114,827
40	68°	150,321	99,964
45	64°	132,811	88,319
50	61°	118,723	78,950
55	57°	107,142	71,249
60	53°	97,454	64,807
65	49°	89,230	59,338
70	44°	82,162	54,638
75	40°	76,022	50,554
80	34°	70,637	46,974
85	28°	65,878	43,809
90	20°	61,641	40,991
95	3°	50,565	33,629

CAPACITY LOAD CHART GC-100T-100L FOOT BOOM

RADIUS (FEET)	BOOM ANGLE	STATIC (LB.)	DYNAMIC (LB.)
22	81°	224,896	149,556
25	79°	228,798	158,795
30	76°	201,397	133,930
35	73°	171,886	114,304
40	70°	149,541	99,445
45	67°	132,035	87,804
50	64°	117,950	78,437
55	61°	106,374	70,739
60	58°	96,688	64,298
65	54°	88,467	58,830
70	50°	81,400	54,131
75	46°	75,262	50,049
80	42°	69,879	46,470
85	38°	65,121	43,306
90	33°	60,885	40,489
95	27°	57,090	37,965
100	19°	53,669	35,690
105	2°	45,283	30,116

CAPACITY LOAD CHART GC-100T-110L FOOT BOOM

RADIUS (FEET)	BOOM ANGLE	STATIC (LB.)	DYNAMIC (LB.)
23	81°	228,798	153,070
30	78°	200,602	133,401
35	75°	171,099	113,781
40	72°	148,760	98,926
45	70°	131,260	87,287
50	67°	117,179	77,924
55	64°	105,605	70,227
60	61°	95,922	63,788
65	58°	87,703	58,323
70	55°	80,639	53,625
75	51°	74,502	49,544
80	48°	69,121	45,965
85	44°	64,364	42,802
90	40°	60,129	39,986
95	36°	56,335	37,463
100	31°	52,916	35,189
105	26°	49,818	33,129
110	18°	46,999	31,254
115	2°	40,671	27,048

CAPACITY LOAD CHART GC-100T-120L FOOT BOOM

RADIUS (FEET)	BOOM ANGLE	STATIC (LB.)	DYNAMIC (LB.)
24	81°	228,498	156,884
30	79°	199,807	132,872
35	76°	170,312	113,257
40	74°	147,979	98,407
45	71°	130,484	86,772
50	69°	116,407	77,410
55	66°	104,836	69,716
60	64°	95,156	63,279
65	61°	86,940	57,815
70	58°	79,877	53,118
75	55°	73,742	49,039
80	52°	68,363	45,461
85	49°	63,607	42,299
90	46°	59,374	39,483
95	42°	55,580	36,961
100	39°	52,162	34,688
105	34°	49,065	32,628
110	30°	46,247	30,754
115	24°	43,672	29,042
120	18°	41,309	27,471
125	2°	36,587	24,332

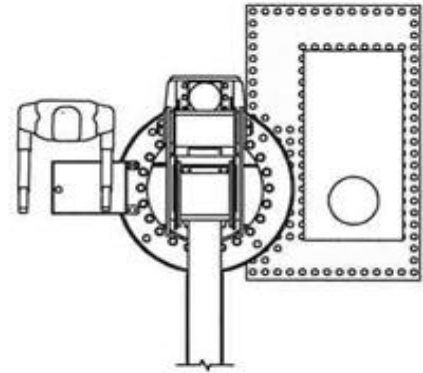
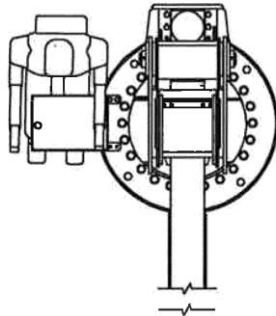
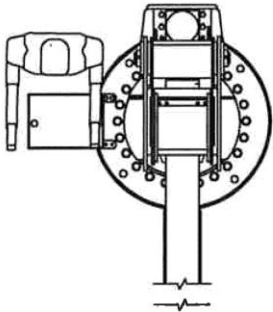
CAPACITY LOAD CHART GC-100T-130L FOOT BOOM			
RADIUS (FEET)	BOOM ANGLE	STATIC (LB.)	DYNAMIC (LB.)
26	81°	228,798	152,753
30	80°	199,012	132,343
35	77°	169,525	112,734
40	75°	147,199	97,887
45	73°	129,708	86,256
50	71°	115,635	76,897
55	68°	104,067	69,205
60	66°	94,391	62,770
65	63°	86,176	57,307
70	61°	79,116	52,612
75	58°	72,982	48,533
80	56°	67,604	44,957
85	53°	62,850	41,795
90	50°	58,618	38,981
95	47°	54,825	36,459
100	44°	51,408	34,186
105	41°	48,312	32,128
110	37°	45,495	30,254
115	33°	42,920	28,542
120	29°	40,558	26,971
125	23°	38,383	25,525
130	17°	36,374	24,188
135	2°	32,928	21,899

CAPACITY LOAD CHART GC-100T-140L FOOT BOOM			
RADIUS (FEET)	BOOM ANGLE	STATIC (LB.)	DYNAMIC (LB.)
27	81°	216,352	143,873
30	80°	198,217	131,814
35	78°	168,738	112,211
40	76°	146,418	97,368
45	74°	128,932	85,740
50	72°	114,863	76,384
55	70°	103,299	68,694
60	68°	93,625	62,261
65	65°	85,412	56,799
70	63°	78,354	52,105
75	61°	72,223	48,028
80	58°	66,846	44,452
85	56°	62,093	41,292
90	53°	57,862	38,478
95	51°	54,071	35,957
100	48°	50,654	33,685
105	45°	47,559	31,627
110	42°	44,743	29,754
115	39°	42,169	28,042
120	36°	39,807	26,472
125	32°	37,633	25,026
130	28°	35,624	23,690
135	23°	33,763	22,452
140	16°	32,034	21,302
145	2°	29,615	19,696

NET LOAD: ALL AUXILIARY LOAD HANGING DEVICES SUCH AS LOAD FALLS, SLINGS, LOAD BLOCKS, AND HOOKS, ETC., SHALL BE CONSIDERED PART OF THE LOAD & ITS WEIGHT SHALL BE SUBTRACTED FROM THE LIFTING CAPACITY TO DETERMINE THE NET LOAD CAPACITY. ALL CRANE OPERATORS MUST ADHERE TO OPERATING & MAINTENANCE PROCEDURES OF API- RP2D, LATEST EDITION.

WARNING: OPERATION OF THIS EQUIPMENT BY PERSONNEL NOT QUALIFIED IS STRICTLY PROHIBITED !

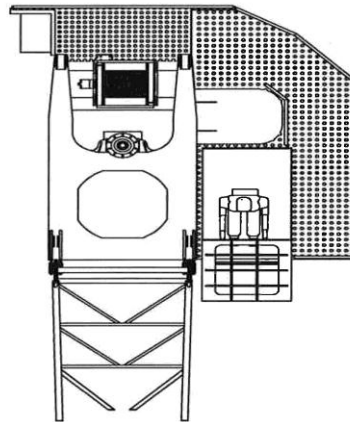
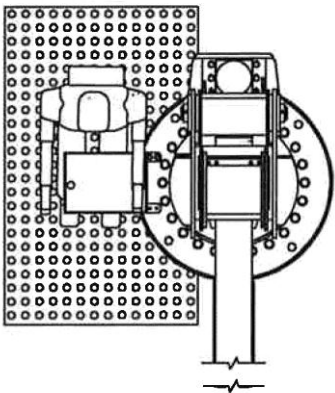
CRANE CONTROL CONFIGURATIONS



1 Walk Around Controls

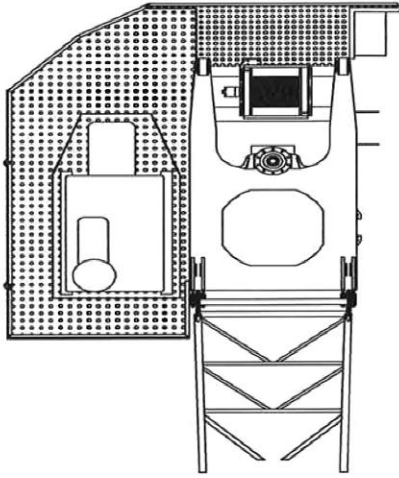
2 Operators Seat

3 Walk Around Controls
Onboard Diesel or Electric
Power

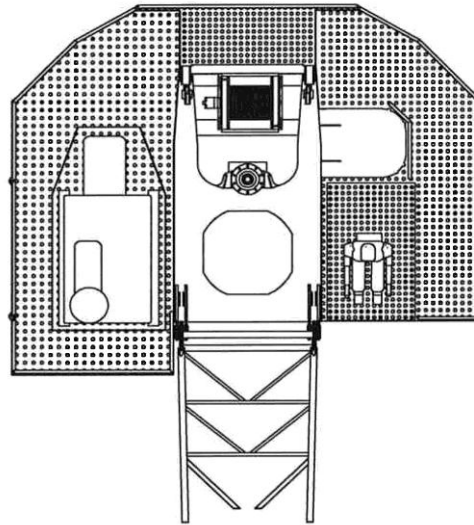


4 Open Onboard Controls
With Platform

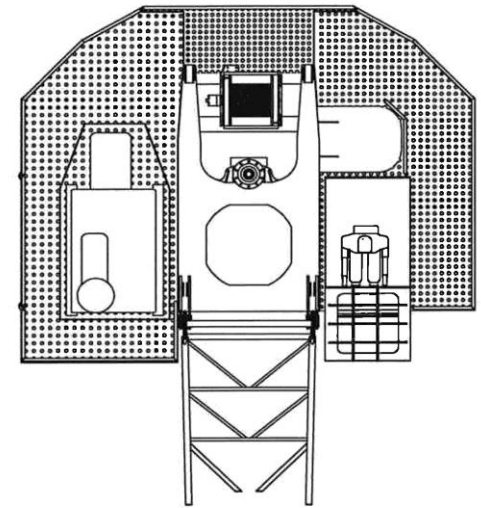
5 Enclosed Operators Cab
With Platforms



6 Diesel or Electric Hydraulic Power With Platforms



7 Open Onboard Controls Diesel or Electric Hydraulic Power With Platforms



8 Enclosed Operators Cab Diesel or Electric Hydraulic Power With Platforms

Available Options

■ Power Supplies

- Electro-hydraulic
- Diesel-hydraulic
- Hazardous location
- Crane or remote mounted

■ Controls

- Crane-mounted platform
- Remote (hydraulic, electric or radio)
- Chest pack (with umbilical or radio)
- Operator's cab
 - Air conditioning
 - Heating
 - Windshield wiper/washer
 - Acoustic shielding
 - Tinted glass

■ Load Indicating System

- Visual and/or audible alarms
- Digital and/or graphic display
- Overload protection

■ Design for Extreme Low Temperature Installations

■ Lighting Packages

- Hazardous location
- Aircraft warning
- Pivoting boom

■ Corrosion Protection

- Stainless steel hydraulic fittings and hose ends
- Stainless or nickel-chrome cylinder rods
- Stainless steel hydraulic reservoirs and diesel tanks

■ Various Pedestal Heights

- Bottom flange for bolted mounting
- Customized to mate with ship's foundation

■ Regulatory Body Certification

- ABS – DNV – Lloyds – BV – NKK – GL

■ Anti-two Blocking System

■ Safety System

- Limited swing system
- Deck obstruction avoidance system
- Fire and gas detection/warning
- Audible warning horn

■ Winches and Rigging

- Auxiliary hoist
- Emergency load lowering

■ Special Coating Systems & Colors

■ Maintenance Platforms & Boom Top Walkway