

AVAILABLE BOOM LENGTHS	
Model	A - Dim
70L	70 ft.
80L	80 ft.
90L	90 ft.
100L	100 ft
110L	110 ft
120L	120 ft

STANDARD CRANE/SPECIFICATIONS	OPTIONAL EQUIPMENT/SPECIFICATIONS
<ul style="list-style-type: none"> • API – 2C Monogram 	<ul style="list-style-type: none"> • Optional Prime Mover: Detroit, Duetz Power Pack
<ul style="list-style-type: none"> • Hydraulic Swing Mechanism w/Adjustable Mount 	<ul style="list-style-type: none"> • Optional Starter System; Electric or Hydraulic
<ul style="list-style-type: none"> • 18" Manway 	<ul style="list-style-type: none"> • Winch Removal Jib Device
<ul style="list-style-type: none"> • Hydraulic Load Cell Indicating System 	<ul style="list-style-type: none"> • 440C Stainless Steel Heat Treated Pins
<ul style="list-style-type: none"> • Hydraulic Anti Two Block System 	<ul style="list-style-type: none"> • ABS Certifications

There are six boom lengths available on this crane, Scroll down for capacities.

CAPACITY LOAD CHART GC-50T-70L FOOT BOOM			
RADIUS (FEET)	BOOM ANGLE	STATIC (LB.)	DYNAMIC (LB.)
16	82°	114,160	75,917
20	78°	113,496	74,135
25	73°	94,192	62,637
30	69°	78,323	52,084
35	65°	66,819	44,435
40	60°	58,099	38,636
45	55°	51,260	34,088
50	50°	45,753	30,426
55	44°	41,223	27,414
60	38°	37,432	24,892
65	30°	34,212	22,751
70	20°	31,444	20,910
73	2°	26,962	17,934

CAPACITY LOAD CHART GC-50T-80L FOOT BOOM			
RADIUS (FEET)	BOOM ANGLE	STATIC (LB.)	DYNAMIC (LB.)
18	82°	113,310	75,444
20	79°	112,333	73,217
25	76°	93,778	62,362
30	72°	77,913	51,812
35	68°	66,413	44,165
40	64°	57,694	38,367
45	60°	50,858	33,820
50	56°	45,352	30,159
55	51°	40,823	27,148
60	46°	37,033	24,627
65	41°	33,814	22,487
70	35°	31,047	20,646
75	28°	28,642	19,047
80	19°	26,532	17,644
83	2°	23,460	15,604

CAPACITY LOAD CHART GC-50T-90L FOOT BOOM

RADIUS (FEET)	BOOM ANGLE	STATIC (LB.)	DYNAMIC (LB.)
19	82°	108,925	72,594
20	80°	108,275	72,201
25	77°	93,364	62,087
30	74°	77,503	51,539
35	71°	66,006	43,894
40	67°	57,290	38,098
45	64°	50,455	33,553
50	60°	44,951	29,892
55	56°	40,424	26,882
60	52°	36,635	24,362
65	48°	33,417	22,222
70	44°	30,650	20,382
75	39°	28,245	18,783
80	33°	26,136	17,380
85	27°	24,271	16,140
90	18°	22,611	15,036
93	2°	20,531	13,656

CAPACITY LOAD CHART GC-50T-100L FOOT BOOM

RADIUS (FEET)	BOOM ANGLE	STATIC (LB.)	DYNAMIC (LB.)
20.5	82°	98,872	66,505
25	79°	92,950	61,812
30	76°	77,093	51,267
35	73°	65,600	43,624
40	70°	56,886	37,829
45	66°	50,053	33,285
50	63°	44,550	29,626
55	60°	40,024	26,616
60	57°	36,236	24,097
65	53°	33,019	21,957
70	49°	30,253	20,118
75	45°	27,848	18,519
80	41°	25,740	17,117
85	37°	23,876	15,878
90	31°	22,216	14,774
95	25°	20,728	13,784
100	17°	19,387	12,892
103	2°	18,029	11,992

CAPACITY LOAD CHART GC-50T-110L FOOT BOOM

RADIUS (FEET)	BOOM ANGLE	STATIC (LB.)	DYNAMIC (LB.)
20	82°	89,803	60,505
25	80°	87,273	58,755
30	77°	76,684	50,995
35	74°	65,193	43,353
40	71°	56,482	37,561
45	69°	49,650	33,018
50	66°	44,149	29,359
55	63°	39,624	26,350
60	60°	35,837	23,832
65	57°	32,621	21,693
70	54°	29,855	19,854
75	50°	27,452	18,256
80	47°	25,344	16,854
85	43°	23,481	15,615
90	39°	21,821	14,511
95	35°	20,333	13,522
100	30°	18,993	12,630
105	24°	17,778	11,822
110	16°	16,673	11,087
115	1°	15,854	10,543

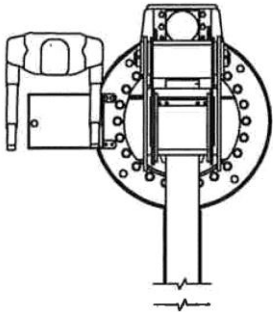
CAPACITY LOAD CHART GC-50T-120L FOOT BOOM

RADIUS (FEET)	BOOM ANGLE	STATIC (LB.)	DYNAMIC (LB.)
23.5	82°	81,701	55,067
25	80°	80,543	54,263
30	78°	74,756	49,735
35	76°	64,350	42,812
40	73°	56,077	37,292
45	71°	49,248	32,750
50	68°	43,748	29,093
55	65°	39,225	26,084
60	63°	35,439	23,567
65	60°	32,223	21,428
70	57°	29,458	19,590
75	54°	27,056	17,992
80	51°	24,948	16,591
85	48°	23,085	15,352
90	45°	21,426	14,248
95	41°	19,939	13,259
100	37°	18,599	12,368
105	33°	17,384	11,561
110	29°	16,279	10,826
115	23°	15,269	10,154
120	15°	14,342	9,537
123	1°	13,651	9,078

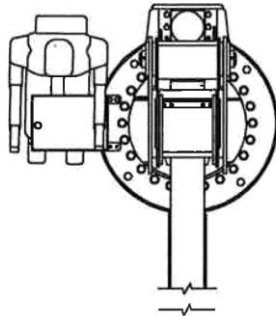
NET LOAD: ALL AUXILIARY LOAD HANGING DEVICES SUCH AS LOAD FALLS, SLINGS, LOAD BLOCKS, AND HOOKS, ETC., SHALL BE CONSIDERED PART OF THE LOAD & ITS WEIGHT SHALL BE SUBTRACTED FROM THE LIFTING CAPACITY TO DETERMINE THE NET LOAD CAPACITY. ALL CRANE OPERATORS MUST ADHERE TO OPERATING & MAINTENANCE PROCEDURES OF API-RP2D, LATEST EDITION.

WARNING: OPERATION OF THIS EQUIPMENT BY PERSONNEL NOT QUALIFIED IS STRICTLY PROHIBITED !

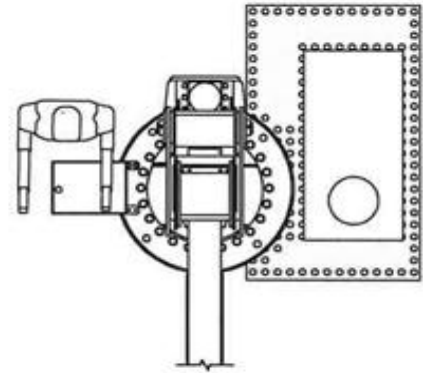
CRANE CONTROL CONFIGURATIONS



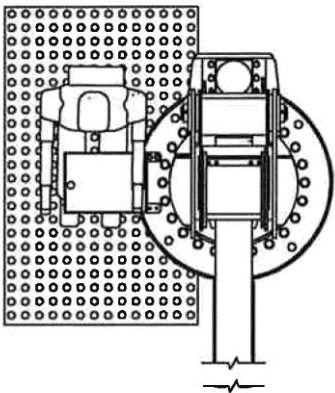
1 Walk Around Controls



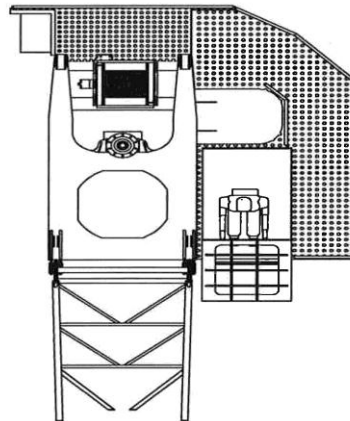
2 Operators Seat



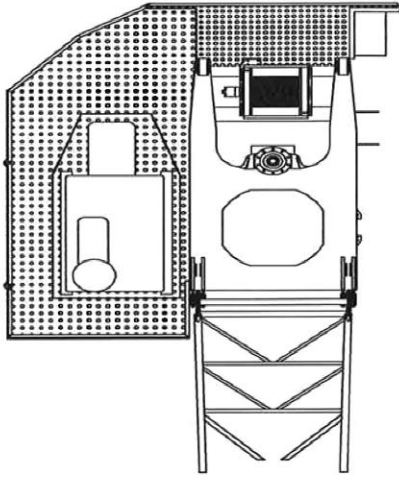
3 Walk Around Controls
Onboard Diesel or Electric
Power



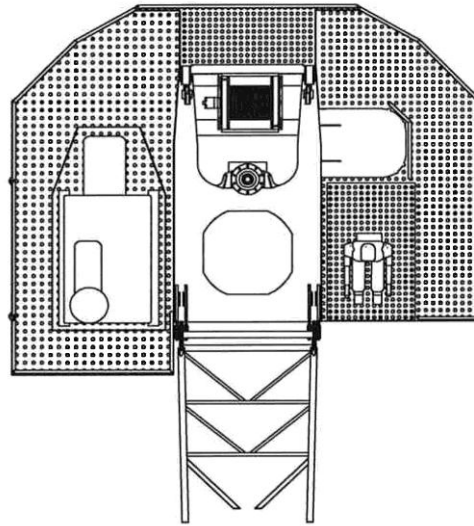
4 Open Onboard Controls
With Platform



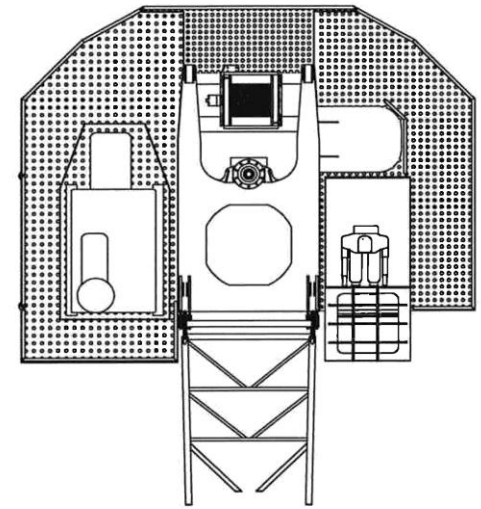
5 Enclosed Operators Cab
With Platforms



6 Diesel or Electric Hydraulic Power With Platforms



7 Open Onboard Controls Diesel or Electric Hydraulic Power With Platforms



8 Enclosed Operators Cab Diesel or Electric Hydraulic Power With Platforms

Available Options

■ Power Supplies

- Electro-hydraulic
- Diesel-hydraulic
- Hazardous location
- Crane or remote mounted

■ Controls

- Crane-mounted platform
- Remote (hydraulic, electric or radio)
- Chest pack (with umbilical or radio)
- Operator's cab
 - Air conditioning
 - Heating
 - Windshield wiper/washer
 - Acoustic shielding
 - Tinted glass

■ Load Indicating System

- Visual and/or audible alarms
- Digital and/or graphic display
- Overload protection

■ Design for Extreme Low Temperature Installations

■ Lighting Packages

- Hazardous location
- Aircraft warning
- Pivoting boom

■ Corrosion Protection

- Stainless steel hydraulic fittings and hose ends
- Stainless or nickel-chrome cylinder rods
- Stainless steel hydraulic reservoirs and diesel tanks

■ Various Pedestal Heights

- Bottom flange for bolted mounting
- Customized to mate with ship's foundation

■ Regulatory Body Certification

- ABS – DNV – Lloyds – BV – NKK – GL

■ Anti-two Blocking System

■ Safety System

- Limited swing system
- Deck obstruction avoidance system
- Fire and gas detection/warning
- Audible warning horn

■ Winches and Rigging

- Auxiliary hoist
- Emergency load lowering

■ Special Coating Systems & Colors

■ Maintenance Platforms & Boom Top Walkway