

AVAILABLE BOOM LENGTHS	
Model	A - Dim
90L	90 ft.
100L	100 ft.
110L	110 ft.
120L	120 ft.
130L	130 ft.
140L	140 ft.

STANDARD CRANE/SPECIFICATIONS	OPTIONAL EQUIPMENT/SPECIFICATIONS
<ul style="list-style-type: none"> • API – 2C Monogram 	<ul style="list-style-type: none"> • Optional Prime Mover: Detroit, Duetz Power Pack
<ul style="list-style-type: none"> • Hydraulic Swing Mechanism w/Adjustable Mount 	<ul style="list-style-type: none"> • Optional Starter System; Electric or Hydraulic
<ul style="list-style-type: none"> • 18" Manway 	<ul style="list-style-type: none"> • Winch Removal Jib Device
<ul style="list-style-type: none"> • Hydraulic Load Cell Indicating System 	<ul style="list-style-type: none"> • 440C Stainless Steel Heat Treated Pins
<ul style="list-style-type: none"> • Hydraulic Anti Two Block System 	<ul style="list-style-type: none"> • ABS Certifications

There are six boom lengths available on this crane, Scroll down for capacities.

CAPACITY LOAD CHART GC-70T-90L FOOT BOOM			
RADIUS (FEET)	BOOM ANGLE	STATIC (LB.)	DYNAMIC (LB.)
18.8	82°	156,085	107,624
20	81°	156,085	103,797
25	77°	123,265	81,971
30	74°	101,384	67,421
35	71°	85,756	57,027
40	67°	74,034	49,233
45	64°	64,917	43,170
50	60°	57,624	38,320
55	56°	51,656	34,351
60	52°	46,683	31,044
65	48°	42,476	28,246
70	44°	38,869	25,848
75	39°	35,743	23,769
80	33°	33,008	21,950
85	27°	30,595	20,345
90	18°	28,450	18,919
94	2°	26,892	17,883

CAPACITY LOAD CHART GC-70T-100L FOOT BOOM

RADIUS (FEET)	BOOM ANGLE	STATIC (LB.)	DYNAMIC (LB.)
20.3	82°	153,738	102,112
25	79°	122,905	81,608
30	76°	101,037	67,066
35	73°	85,418	56,679
40	70°	73,703	48,888
45	67°	64,591	42,829
50	63°	57,302	37,982
55	60°	51,338	34,016
60	57°	46,368	30,711
65	53°	42,163	27,914
70	50°	38,558	25,517
75	46°	35,434	23,440
80	41°	32,701	21,622
85	37°	30,289	20,018
90	32°	28,145	18,592
95	25°	26,227	17,317
100	17°	24,500	16,169
104	2°	23,234	15,327

CAPACITY LOAD CHART GC-70T-110L FOOT BOOM

RADIUS (FEET)	BOOM ANGLE	STATIC (LB.)	DYNAMIC (LB.)
21.8	82°	153,071	95,252
25	80°	122,255	81,300
30	77°	100,399	66,766
35	74°	84,789	56,385
40	72°	73,081	48,599
45	69°	63,974	42,543
50	66°	56,689	37,698
55	63°	50,728	33,735
60	60°	45,762	30,431
65	57°	41,559	27,637
70	54°	37,956	25,241
75	51°	34,834	23,165
80	47°	32,102	21,348
85	43°	29,692	19,745
90	39°	27,549	18,320
95	35°	25,632	17,045
100	30°	23,906	15,898
105	24°	22,345	14,860
110	16°	20,626	13,916
114	2°	19,877	13,218

CAPACITY LOAD CHART GC-70T-120L FOOT BOOM

RADIUS (FEET)	BOOM ANGLE	STATIC (LB.)	DYNAMIC (LB.)
23.2	82°	140,000	93,300
25	81°	121,627	80,867
30	78°	99,785	66,342
35	76°	84,183	55,966
40	73°	72,482	48,185
45	71°	63,380	42,133
50	68°	56,099	37,291
55	66°	50,142	33,330
60	63°	45,178	30,028
65	60°	40,978	27,235
70	57°	37,377	24,841
75	54°	34,257	22,766
80	51°	31,527	20,950
85	48°	29,117	19,348
90	45°	26,976	17,924
95	41°	25,060	16,650
100	38°	23,335	15,503
105	33°	21,775	14,465
110	29°	20,357	13,522
115	23°	19,062	12,661
120	16°	17,875	11,872
124	2°	16,991	11,284

CAPACITY LOAD CHART GC-70T-130L FOOT BOOM

RADIUS (FEET)	BOOM ANGLE	STATIC (LB.)	DYNAMIC (LB.)
24.7	82°	122,373	81,378
25	81°	120,954	80,435
30	79°	99,124	65,917
35	77°	83,531	55,549
40	75°	71,837	47,771
45	72°	62,741	41,723
50	70°	55,464	36,884
55	68°	49,510	32,924
60	65°	44,549	29,625
65	63°	40,351	26,833
70	60°	36,752	24,440
75	58°	33,634	22,367
80	55°	30,905	20,552
85	52°	28,498	18,951
90	49°	26,358	17,528
95	46°	24,442	16,254
100	43°	22,719	15,108
105	40°	21,160	14,071
110	36°	19,742	13,128
115	32°	18,448	12,268
120	28°	17,261	11,479
125	22°	16,170	10,753
130	15°	15,163	10,083
134	1°	14,408	9,581

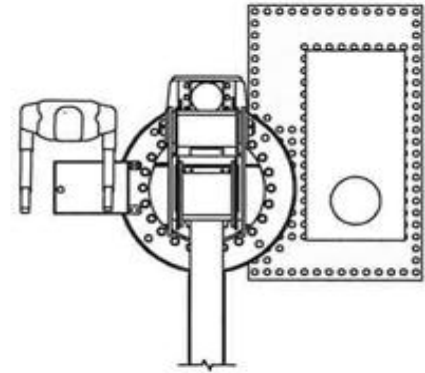
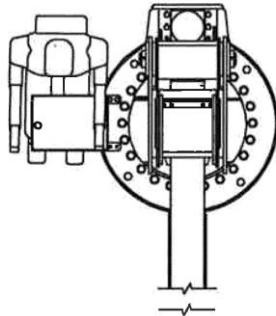
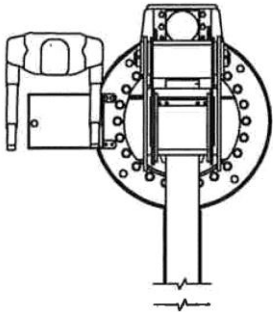
CAPACITY LOAD CHART GC-70T-140L FOOT BOOM

RADIUS (FEET)	BOOM ANGLE	STATIC (LB.)	DYNAMIC (LB.)
26.2	82°	111,345	76,519
30	80°	96,011	65,493
35	78°	82,469	55,130
40	76°	71,214	47,357
45	74°	62,124	41,312
50	71°	54,851	36,476
55	69°	48,901	32,519
60	67°	43,943	29,222
65	65°	39,747	26,432
70	62°	36,151	24,040
75	60°	33,034	21,967
80	58°	30,307	20,154
85	55°	27,901	18,554
90	53°	25,761	17,131
95	50°	23,848	15,859
100	47°	22,125	14,713
105	44°	20,567	13,677
110	41°	19,150	12,735
115	38°	17,857	11,875
120	35°	16,671	11,086
125	31°	15,580	10,361
130	26°	14,573	9,691
135	21°	13,641	9,071
140	14°	12,775	8,495
144	1°	12,123	8,062

NET LOAD: ALL AUXILIARY LOAD HANGING DEVICES SUCH AS LOAD FALLS, SLINGS, LOAD BLOCKS, AND HOOKS, ETC., SHALL BE CONSIDERED PART OF THE LOAD & ITS WEIGHT SHALL BE SUBTRACTED FROM THE LIFTING CAPACITY TO DETERMINE THE NET LOAD CAPACITY. ALL CRANE OPERATORS MUST ADHERE TO OPERATING & MAINTENANCE PROCEDURES OF API- RP2D, LATEST EDITION.

WARNING: OPERATION OF THIS EQUIPMENT BY PERSONNEL NOT QUALIFIED IS STRICTLY PROHIBITED !

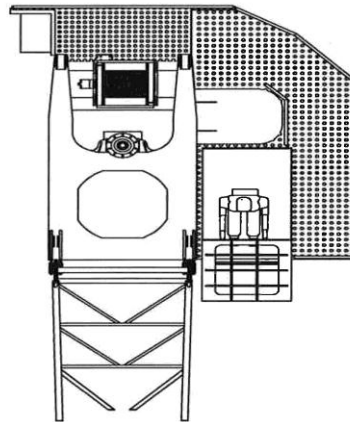
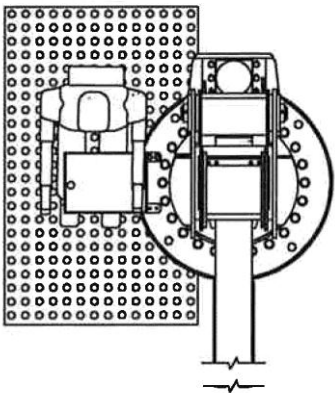
CRANE CONTROL CONFIGURATIONS



1 Walk Around Controls

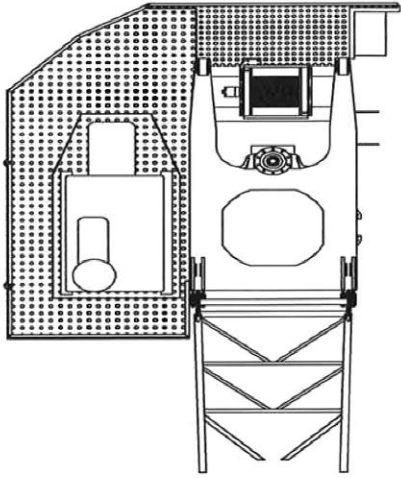
2 Operators Seat

3 Walk Around Controls
Onboard Diesel or Electric
Power

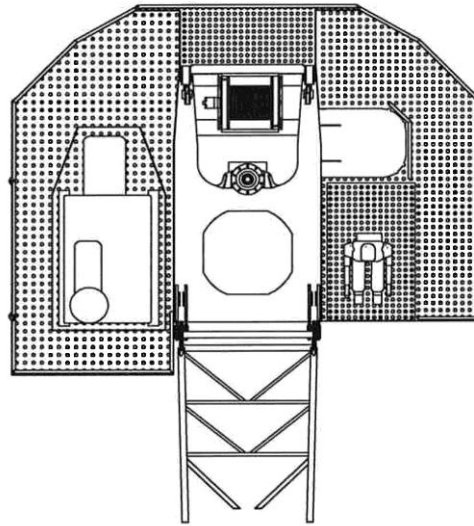


4 Open Onboard Controls
With Platform

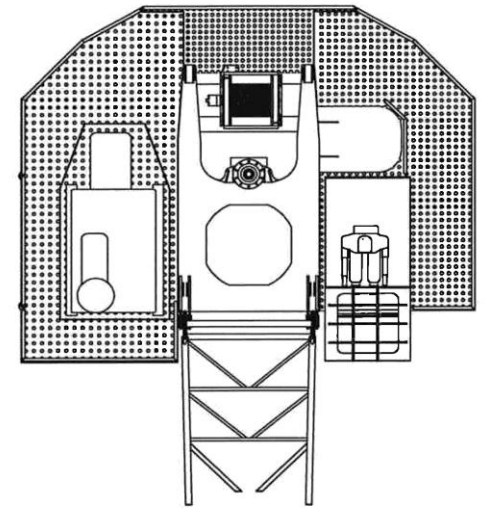
5 Enclosed Operators Cab
With Platforms



6 Diesel or Electric Hydraulic Power With Platforms



7 Open Onboard Controls Diesel or Electric Hydraulic Power With Platforms



8 Enclosed Operators Cab Diesel or Electric Hydraulic Power With Platforms

Available Options

■ Power Supplies

- Electro-hydraulic
- Diesel-hydraulic
- Hazardous location
- Crane or remote mounted

■ Controls

- Crane-mounted platform
- Remote (hydraulic, electric or radio)
- Chest pack (with umbilical or radio)
- Operator's cab
 - Air conditioning
 - Heating
 - Windshield wiper/washer
 - Acoustic shielding
 - Tinted glass

■ Load Indicating System

- Visual and/or audible alarms
- Digital and/or graphic display
- Overload protection

■ Design for Extreme Low Temperature Installations

■ Lighting Packages

- Hazardous location
- Aircraft warning
- Pivoting boom

■ Corrosion Protection

- Stainless steel hydraulic fittings and hose ends
- Stainless or nickel-chrome cylinder rods
- Stainless steel hydraulic reservoirs and diesel tanks

■ Various Pedestal Heights

- Bottom flange for bolted mounting
- Customized to mate with ship's foundation

■ Regulatory Body Certification

- ABS – DNV – Lloyds – BV – NKK – GL

■ Anti-two Blocking System

■ Safety System

- Limited swing system
- Deck obstruction avoidance system
- Fire and gas detection/warning
- Audible warning horn

■ Winches and Rigging

- Auxiliary hoist
- Emergency load lowering

■ Special Coating Systems & Colors

■ Maintenance Platforms & Boom Top Walkway