

4

3

DWG NO

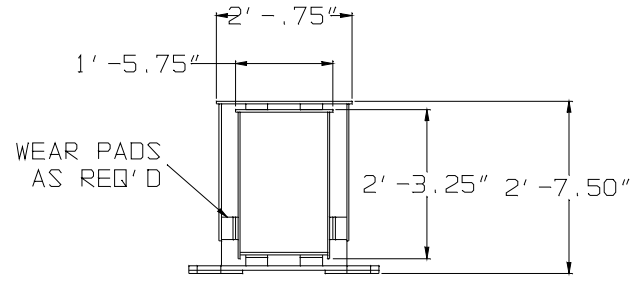
SHT

REV

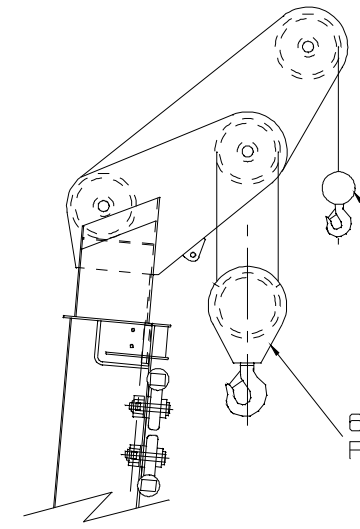
1

REVISIONS

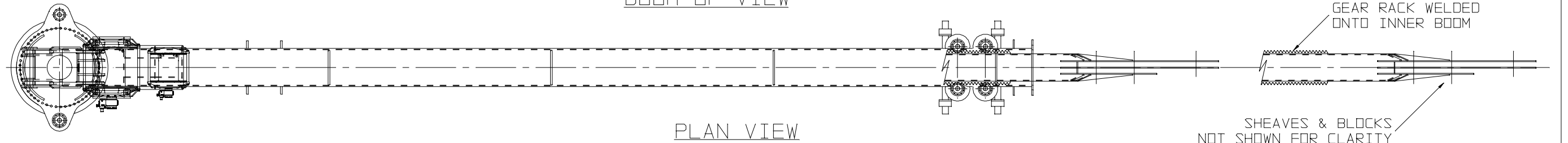
ZONE	REV	DESCRIPTION	DATE	APPROVED



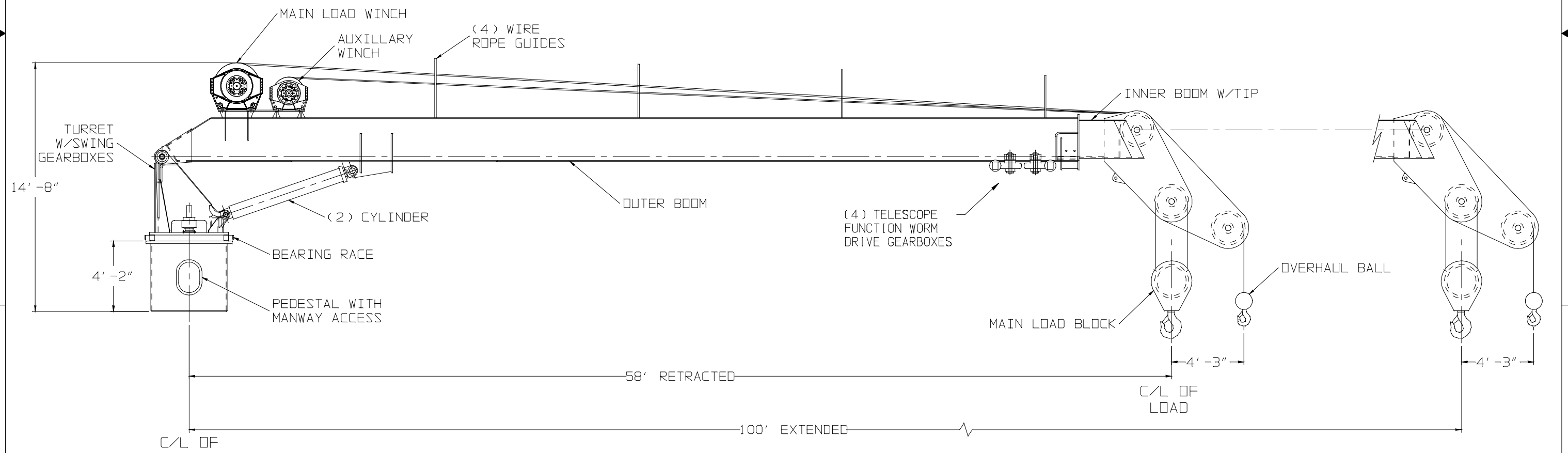
BOOM CROSS-SECTION (SCALE 2:1)



RIGHT SIDE ELEVATION BOOM-UP VIEW



PLAN VIEW



RIGHT SIDE ELEVATION VIEW

NOTES:
 1. THIS IS A BASIC GENERAL ARRANGEMENT. HYDRAULIC COMPONENTS & HOISING NOT SHOWN FOR CLARITY.
 2. PLATFORMS ARE NOT SHOWN BUT ARE AVAILABLE PER CUSTOMER'S SPECIFICATIONS.

GULF CRANE SERVICES INC.		50 Ton - 58'-100' Telescopic Crane General Arrangement		
DESIGNER GFL	DATE 11/26/12	SIZE B	CAGE CODE	DWG NO GCS50B-58-100
APPROVED	SCALE 1/70	RELEASE DATE	WEIGHT	SHEET 1 of 1

4

3

2

1

GC50B-TELESCOPIC BOOM CRANE LOADCHART

R A D I U S	B O O M A N G L E D E G R E E S	FULLY RETRACTED			
		M A I N		A U X	
		ONBOARD F E E T	OFFBOARD	ONBOARD	OFFBOARD
8.2	81.92	100.000	72.100		
10	80.09	100.000	72.100	8.148	8.148
15	75.00	92.934	61.389	8.148	8.148
20	69.76	72.866	48.011	8.148	8.148
25	64.33	59.238	38.925	8.148	8.148
30	58.61	49.934	32.723	8.148	8.148
35	52.48	42.857	28.005	8.148	8.148
40	45.77	37.232	24.255	8.148	8.148
45	38.10	32.802	21.301	8.148	8.148
50	28.67	29.076	18.817	8.148	8.148
55	13.82	25.259	16.273	8.148	8.148
57	0.00	24.361	15.674	8.148	8.148
60	13.24			8.148	8.148
61	0.00			8.148	8.148

R A D I U S	B O O M A N G L E D E G R E E S	50% EXTENDED			
		M A I N		A U X	
		ONBOARD F E E T	OFFBOARD	ONBOARD	OFFBOARD
11.1	81.92	71.034	46.789	8.148	8.148
15	79.07	61.094	40.163	8.148	8.148
20	75.33	53.611	35.174	8.148	8.148
25	71.52	47.901	31.367	8.148	8.148
30	67.61	43.320	28.313	8.148	8.148
35	63.59	38.552	25.135	8.148	8.148
40	59.41	33.492	21.761	8.148	8.148
45	55.03	29.508	19.105	8.148	8.148
50	50.39	26.260	16.940	8.148	8.148
55	45.40	23.511	15.107	8.148	8.148
60	39.91	21.219	13.579	8.148	8.148
65	33.66	19.075	12.150	8.148	8.148
70	26.08	16.908	10.705	8.148	8.148
75	15.07	14.987	9.425	8.148	8.148
78	0.00	14.110	8.840	8.148	8.148
80	14.70			8.148	8.148
82	0.00			8.148	8.148

R A D I U S	B O O M A N G L E D E G R E E S	100% EXTENDED			
		M A I N		A U X	
		ONBOARD F E E T	OFFBOARD	ONBOARD	OFFBOARD
14	81.92	45.372	29.681		
15	81.39	39.732	25.921	8.148	8.148
20	78.47	35.359	23.006	8.148	8.148
25	75.52	31.978	20.752	8.148	8.148
30	72.52	29.153	18.869	8.148	8.148
35	69.47	26.737	17.258	8.148	8.148
40	66.36	24.771	15.947	8.148	8.148
45	63.16	23.088	14.825	8.148	8.148
50	59.87	21.606	13.837	8.148	8.148
55	56.46	20.341	12.994	8.148	8.148
60	52.90	19.227	12.251	8.148	8.148
65	49.16	17.529	11.119	8.148	8.148
70	45.19	15.852	10.001	8.148	8.148
75	40.91	14.481	9.087	8.148	8.148
80	36.21	13.149	8.199	8.148	8.148
85	30.88	11.892	7.361		
90	24.49	10.541	6.461	8.148	7.361
95	15.71	9.343	5.662	8.148	6.460
100	15.43			8.146	5.661
103	0.00			8.146	5.151
					5.030

LOAD UNITS ARE POUNDS x 1000.

TIP SECTION MUST BE SEATED ON ITS STOPS FOR THE FULLY RETRACTED MAIN HOIST CHART TO BE USED.

WHEN BOOM IS EXTENDED BEYOND 50%, THE 100% EXTENDED CAPACITIES ARE TO BE USED.

ONBOARD RATINGS ARE CALCULATED IN ACCORDANCE WITH API RP2C 7TH ED. GENERAL METHOD.

OFFBOARD RATINGS ARE CALCULATED IN ACCORDANCE WITH API RP2C LEGACY METHOD.

PERSONNEL CAPACITIES ARE 50% OF THE CORRESPONDING CARGO CAPACITIES.

LOADCHART TO BE ETCHED OR ENGRAVED ONTO A STAINLESS STEEL PLATE 0.05" OR THICKER. LETTERS AND LINEWORK ARE TO BE FILLED WITH PERMANENT BLACK INK.

← R 3/8" TYP

ZONE	REV	DESCRIPTION	DATE	APPROVED
REVISIONS				

Gulf Crane Services Inc.		GC50B CRANE			
DESIGNER	GFL	8/7/14	SIZE	SERIAL NO	DWG NO
APPROVED	MPT	10/01/14	B	50B13001	GC50B-LC9500
		SCALE	Full	RELEASE DATE	WEIGHT
				SHEET	1 of 1

4

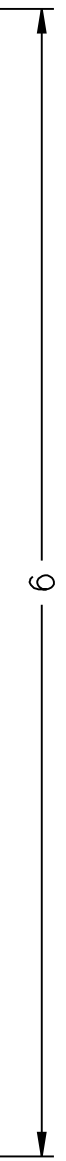
3

DWG NO	SH	REV
--------	----	-----

1

GC50B PEDESTAL CRANE INFORMATIONAL CHART

- 1) This crane is to be operated and maintained in accordance with the GC50B Operator's Manual and the current edition of API RP 2D.
- 2) Main Hoist Rope: 1" Bridon 34LR Grade 1960 Break 124800 lbs. Length 962 feet.
Aux Hoist Rope: 9/16" Bridon 34LR Grade 1960 Break 41600 lbs. Length 338 feet.
Live Rope lengths are 30 feet over theoretical minimum length.
- 3) Maximum hook speeds at the supply boat deck level depend upon airgap and radius. The main hoist first layer hook speed is 42.5 feet per minute and the aux hoist first layer hook speed is 211 feet per minute.
- 4) Main Hoist maximum hook travel: 190 FEET
Main Hoist minimum radius: 8.2 FEET
Main hoist maximum radius: 99.0 FEET
- 5) Aux Hoist maximum hook travel: 195 feet
Aux Hoist minimum radius: 10.0 feet
Aux Hoist Maximum radius: 103.0 feet
- 6) Instructions for use of emergency load lowering devices are located in the Lantec Winch section of the Operator's Manual.



10

R 3/8" TYP.

MATERIAL IS STAINLESS STEEL PLATE, 0.05 INCHES OR THICKER.
IMAGE TO BE ETCHED OR ENGRAVED AND TEXT / LINE WORK TO BE FILLED WITH PERMANENT BLACK INK. SEE DWG GC175L-LC9510 FOR DETAILS OF PLATE.

INFO CHART
FRONT

ZONE	REV	DESCRIPTION	DATE	APPROVED
REVISIONS				

Gulf Crane Services Inc.			GC50B CRANE			
DESIGNER	GFL	9/26/14	SIZE	SERIAL NO	DWG NO	REV
APPROVED	MPT	10/01/14	B	50B13001	GC175L-LC9501	-
			SCALE	RELEASE DATE	WEIGHT	SHEET
			Full			1 of 1

4

3

2

1

D

D

C

C

B

B

A

A



GULF CRANE MODEL GC50T-58-100

MAXIMUM PEDESTAL REACTIONS

<u>MAXIMUM OVERTURNING MOMENT</u>	<u>2596.680 Ft. Kips</u>
<u>MAXIMUM CORRESPONDING THRUST</u>	<u>35.011 Kips</u>

<u>MAXIMUM THRUST</u>	<u>155.060 Kips</u>
<u>MAXIMUM CORRESPONDING OVERTURNING MOMENT</u>	<u>1446.754 Ft. Kips</u>

